



LUXURY IS SPACE

THE  
MONUMENT  
THONG LO

## THE MONUMENT TO GENERATIONS

A testament to the establishment of a family's wealth and prestige manifest in a residential development of monumental significance. Preserve the prosperity of your family through a birth right lasting for generations to come, elegantly crafted in a building defined by the rarest elements and resonating with a distinction that will carry on through the ages.



Photography on location with simulated atmosphere and surroundings.





Computer generated images. / The condition is subject to change without prior notice.

## THE MONUMENT THONG LO LUXURY IS SPACE

Appreciate room to enjoy life to the fullest in a rare development that is big on space. From residential unit sizes unlike any other being built, to majestic trees that have stood in the grounds for over a century, the larger than life proportions magnify the luxury of living in an age when every square inch increases your gratitude of everything life has to offer.





## THE STATEMENT ADDRESS

Home to some of the most well-heeled residents and more than Bangkok's hippest street, Thong Lo is the affluent neighbourhood attracting the city's cognoscenti, captivated by the area's flourishing array of sophisticated dining establishments, cafés, bars and burgeoning boutiques. With a host of the most sought after amenities including prestigious schools and nurseries, leading healthcare facilities and your closest friends at your doorstep, Thong Lo is destined to remain one of the most coveted addresses for a long time to come.



## THONG LO AND GENERATIONS

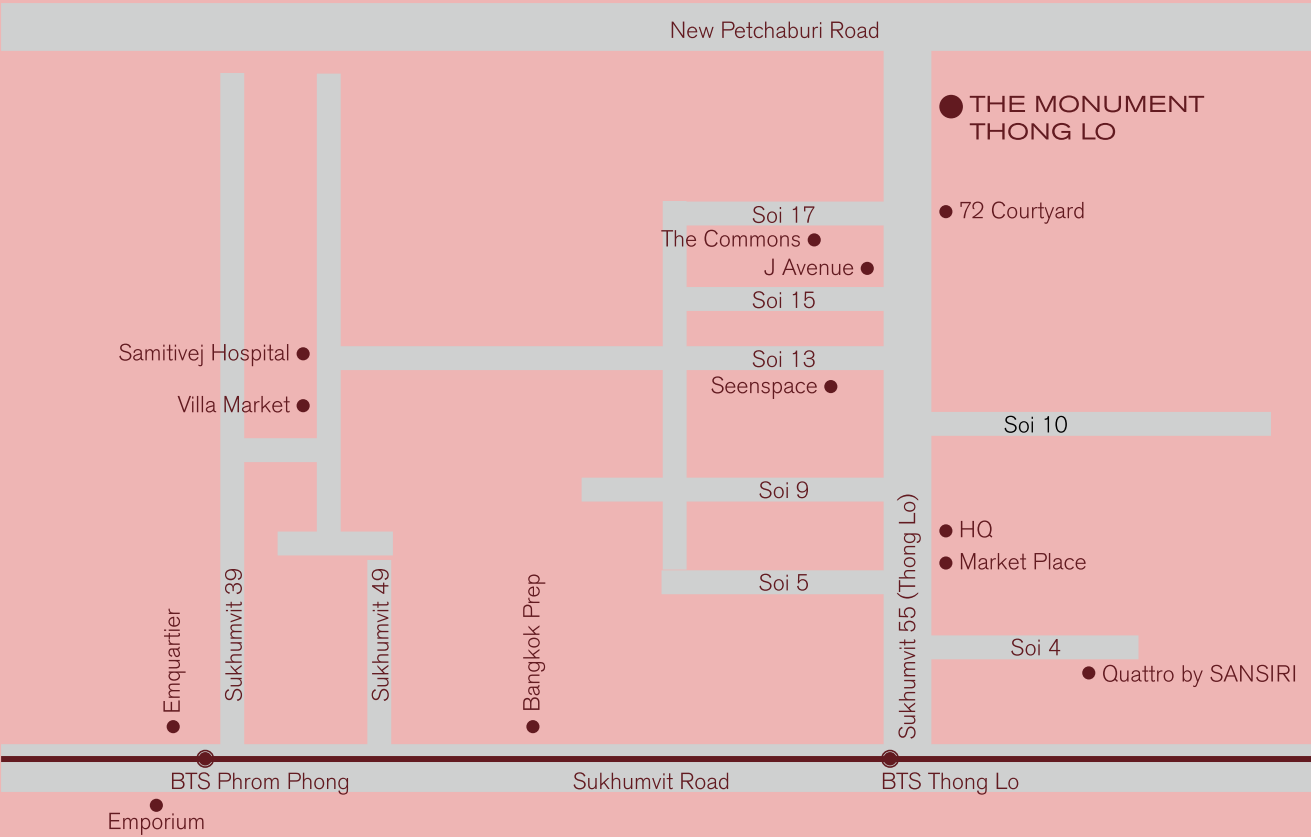
Where else in Bangkok can every generation in your family appreciate the finer things in life? With so much that Thong Lo has to offer, every day will be filled with plentiful choices from the essentials you will always need to the unique activities that make life worth living. Appreciate the joys of spending quality time with the family so close at hand.



Photography on location with simulated atmosphere and surroundings.

## THONG LO MAP

In the heart of Bangkok’s dining and entertainment district, everything you could want is nearby. Moments from The EM District, a multiple of luxury lifestyle shopping complexes and other useful places, nothing is far away being located near Thong Lo BTS Station. With a multitude of small streets acting as handy shortcuts to other areas, further destinations can be easily reached from the nearby expressway.







Computer generated images. / The condition is subject to change without prior notice.

## THE MONUMENT THONG LO

### ARCHITECTURE

A landmark residence rises to prominence in a towering monolith of approximately 177 metres in height, with a state of the art building flawlessly designed by world renowned architecture firm Quintrix. The 45 floor building radiant in its purity, cloaked in light and sound protecting insulated glass with low emissivity film, has been painstakingly crafted utilising a selection of only the finest materials from around the world and warm, rich woods to create what will be the most prestigious address in the ultimate lifestyle hub of Thong Lo.



**Architect Designer:  
Quintrix**

Quintrix Architects is an architectural and design firm established by two partners; Noppon Pisutharnon and Sirichai Zhangwirunchodinon. They have experience in North America, Europe, and South East Asia from Medium to Large scale project. However,a unique small project is also within their scope of work.

They believe the best architecture comes from truly understanding of all elements; form, function, structure, services, and relationship to everything around it. Therefore, designing process is what they place importance on.

These days, tools become seemingly unlimited. Modern architecture take advantage of this greatly increasing design possibilities, yet architects are not just a new group of CAD user. Their team do have a solid understanding of geometry and advance design technology.

They see geometry as the core of the architectural design process. From form-finding to actual construction stage.

Further information of their projects and awards can be obtained on their website: **[www.quintrixarchitects.com](http://www.quintrixarchitects.com)**



Al Sharq Tower



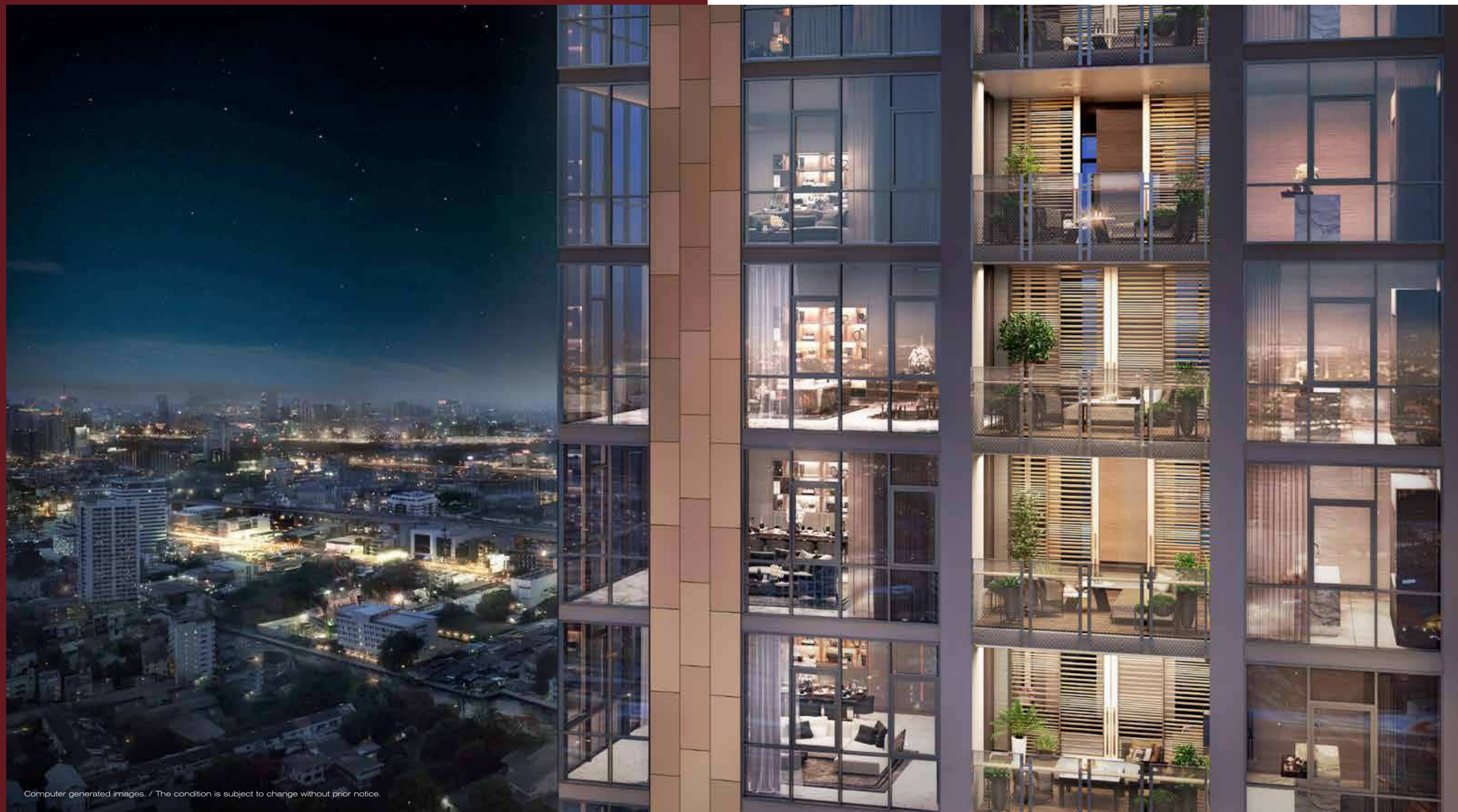
Al Hamra Firdous Tower





Computer generated images. / The condition is subject to change without prior notice.





Computer generated images. / The condition is subject to change without prior notice.

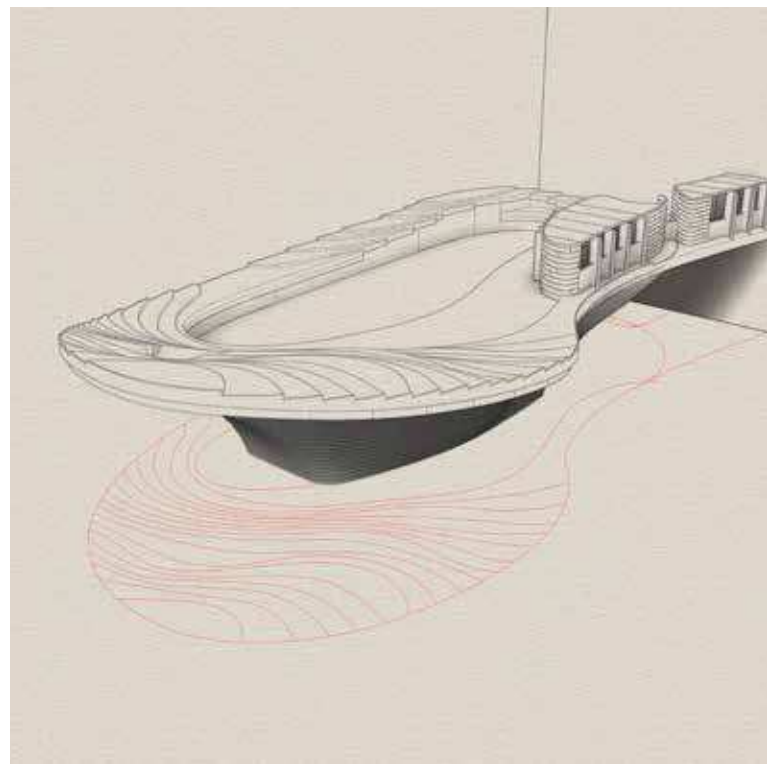
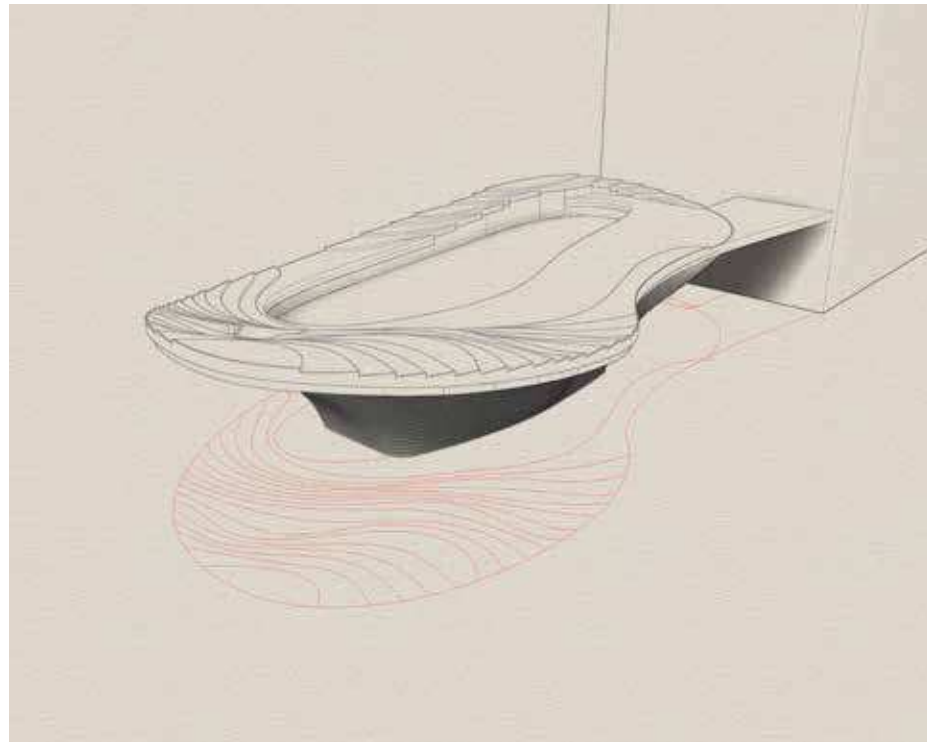
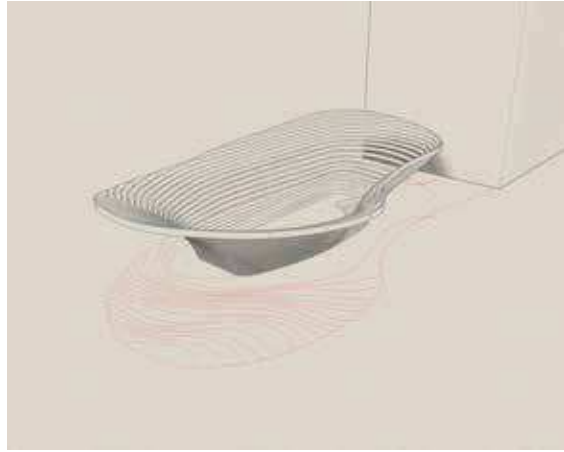




## PENTHOUSES

Soar over the world beneath and appreciate expansive vistas across the Bangkok skyline in one of the three penthouses on offer. With sizes ranging up to 600 square metres and 5 metre high ceilings in the living rooms, these colossal and well-appointed residences are perfect for hosting exclusive parties that are sure to be the talk-of-the-town, or simply enjoy life at the top whilst relaxing with your family, having dinner with the stars and swimming in the private pool amidst the sparkling cityscape.





## SWIMMING POOL

The 2nd floor swimming pool at the front of the project is a striking, iconic feature, shaped from aluminium cladding, showcasing the property's new dimension in architectural design. Plunge into a free flowing sculptural masterpiece of approximately 28 metres in length and imagine you are floating through the sky amidst a pool constructed from white cloud marble, whilst your loved ones recline under the shade afforded by an awning completed utilizing solid wood. The entire facility is perfectly ensconced in a multi-level architectural form that merges with the surrounding landscape of nature to exquisitely envelop you in a unique experience of rejuvenation.





Computer generated images. / The condition is subject to change without prior notice.



## GREEN SPACE

The spirit of the project draws inspiration from the lush, verdant spaces surrounding the building with separate front and rear gardens just like a home. With one measuring 320 square metres and the other 600 square metres, nature is truly interwoven into the design to create a harmony that transcends the experience beyond mere living. Underscored by the soaring luxury of five ancient trees that have stood the test of time over the lifetime of Thong Lo, life continues to flourish beneath their shade in an expansive leafy oasis unique to the centre of the city.



Photography on location with simulated atmosphere and surroundings.



**Landscape Designer:  
Tectonix**

TECTONIX is a multi-disciplinary landscape design firm established in 2005. The firm currently operates with 49 professional staffs, comprising of not only landscape architects, but also a group of architects, interior designers, graphic designers, horticulturists and other technicians.

The diversity in team is embraced by their similarly strong passion on Landscape architecture. They always work as a small team encouraging individual to share their own talent, enhancing the dynamic in team collaboration and offering the effective working environment and experiences.

Their works, widely located throughout Asia-Pacific region; Thailand, India, China, Cambodia, Malaysia, etc., are highly recognized in an excellence in design reaching the international standard.

Their practice has extensive expertise in Residential, Hospitality, School, Commercial and Mix-Used with the full complete landscape architectural services from site planning to construction supervision.

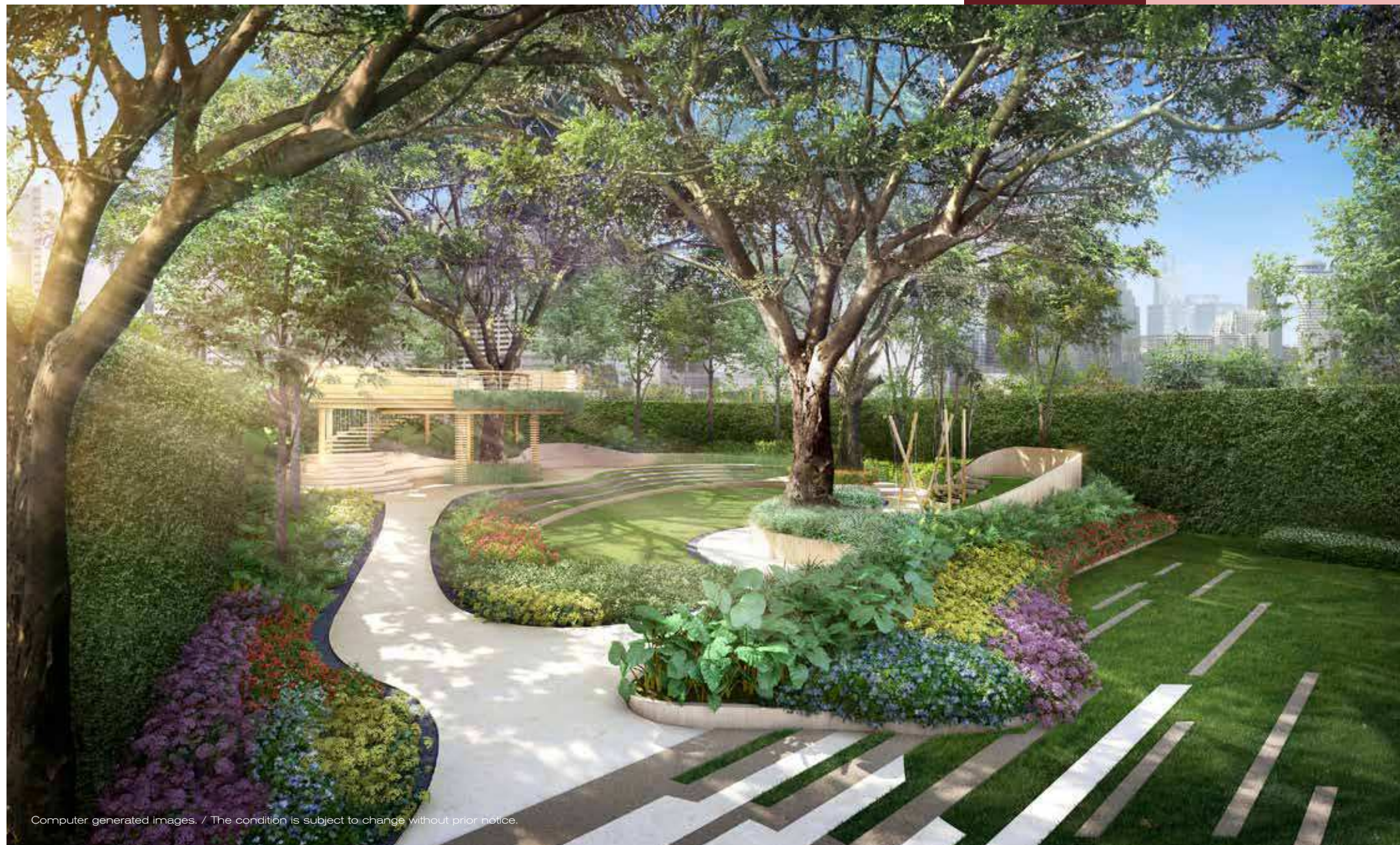
TECTONIX's philosophy is to deliver the best services to their client with uniquely innovative design, to control the practically reasonable project cost and to address the sustainability of the project in the long run.





## GARDEN SPACE

The capacious park sized garden affords an open green space measuring approximately 1,000 square metres in area yet creates a sensation of utmost privacy, as if you are relaxing in the back garden of a family home. Replete with multipurpose areas where innumerable activities may be enjoyed, the space can be adapted in many different ways depending on the time of day such as meeting up with friends or quietly reading a book and having a cup of coffee. Being suitable for activities such as jogging, yoga, children playing and hosting events, the garden is a centre for the development that makes every day pass by with endless joy for residents of every generation.



Computer generated images. / The condition is subject to change without prior notice.



**Interior Designer:  
That's ITH**

...After 12 years of intensive working experience in hospitality, residential, retail and corporate designs in both Bangkok and Hong Kong with several international design awards and recognitions from New York, London, Hongkong and others, a new small design team has been formed under the name... "that's ITH interior"



Interior: NYE by Sansiri



Interior: NYE by Sansiri



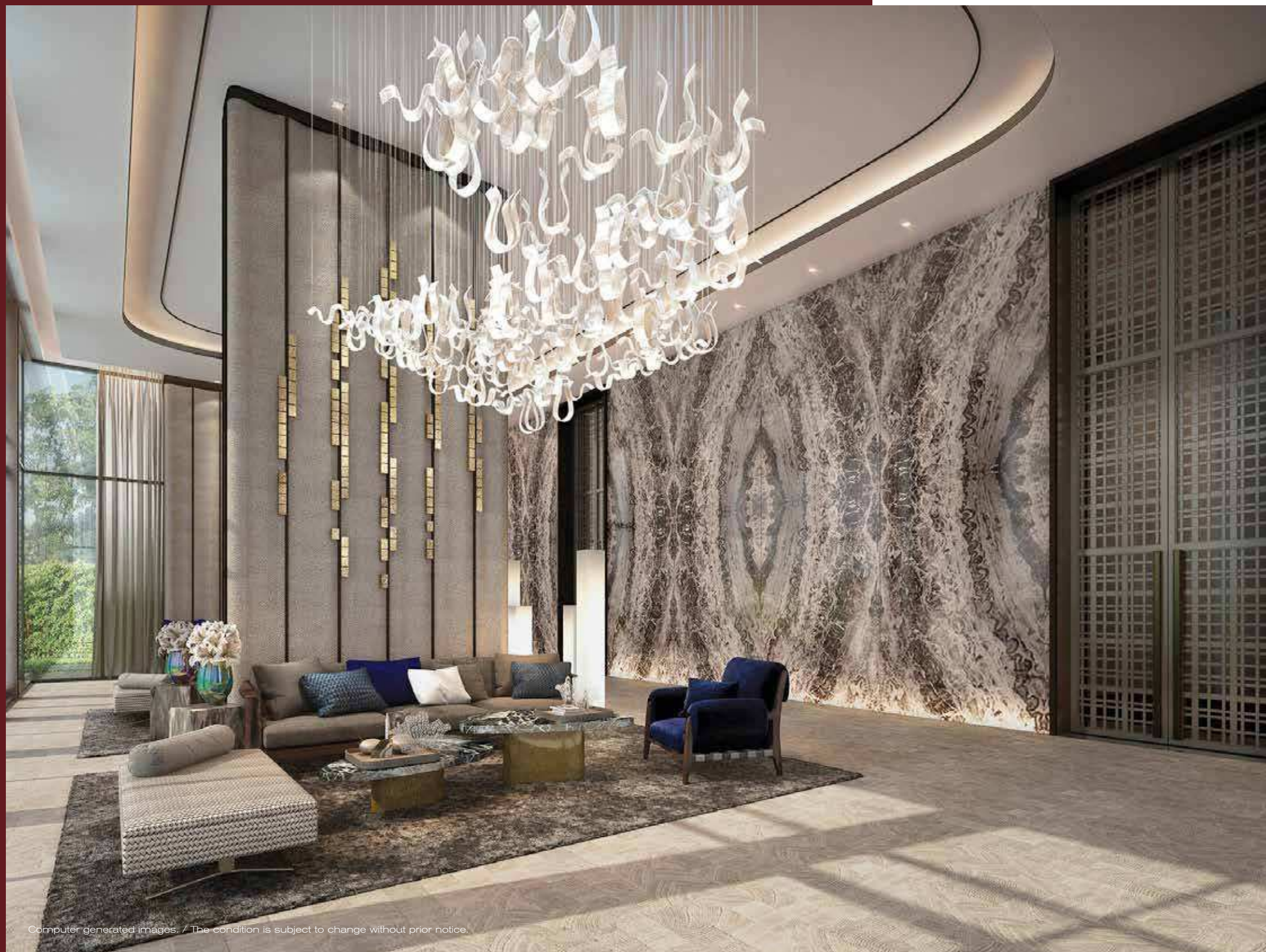


Computer generated images. / The condition is subject to change without prior notice.

## LOBBY

Experience the comforts of home from the very first step through the elegant entrance to the luxurious lobby, paved with solid wood flooring and clad in the finest marble. Every touch point has been selected to evoke a feeling of the unique, with pillars dressed in handpicked, premium leather cow-hide, and furnished with the finest furniture made with exceptional materials such as interlaced leather and petrified wood. Although grand and spacious, the lobby has been cleverly designed to still remain a delightful and cosy sanctuary from the bustling world outside.





Computer generated images. / The condition is subject to change without prior notice.

## MARBLE

Nowhere else will you feel enfolded in so much luxury, with life accentuated in the rarest marbles especially selected for the project based on their beauty and distinctive pattern. Many of the marbles may be found in abundance exclusively here, giving you the feeling of being surrounded by elements that are hard to find and available to only the select few.



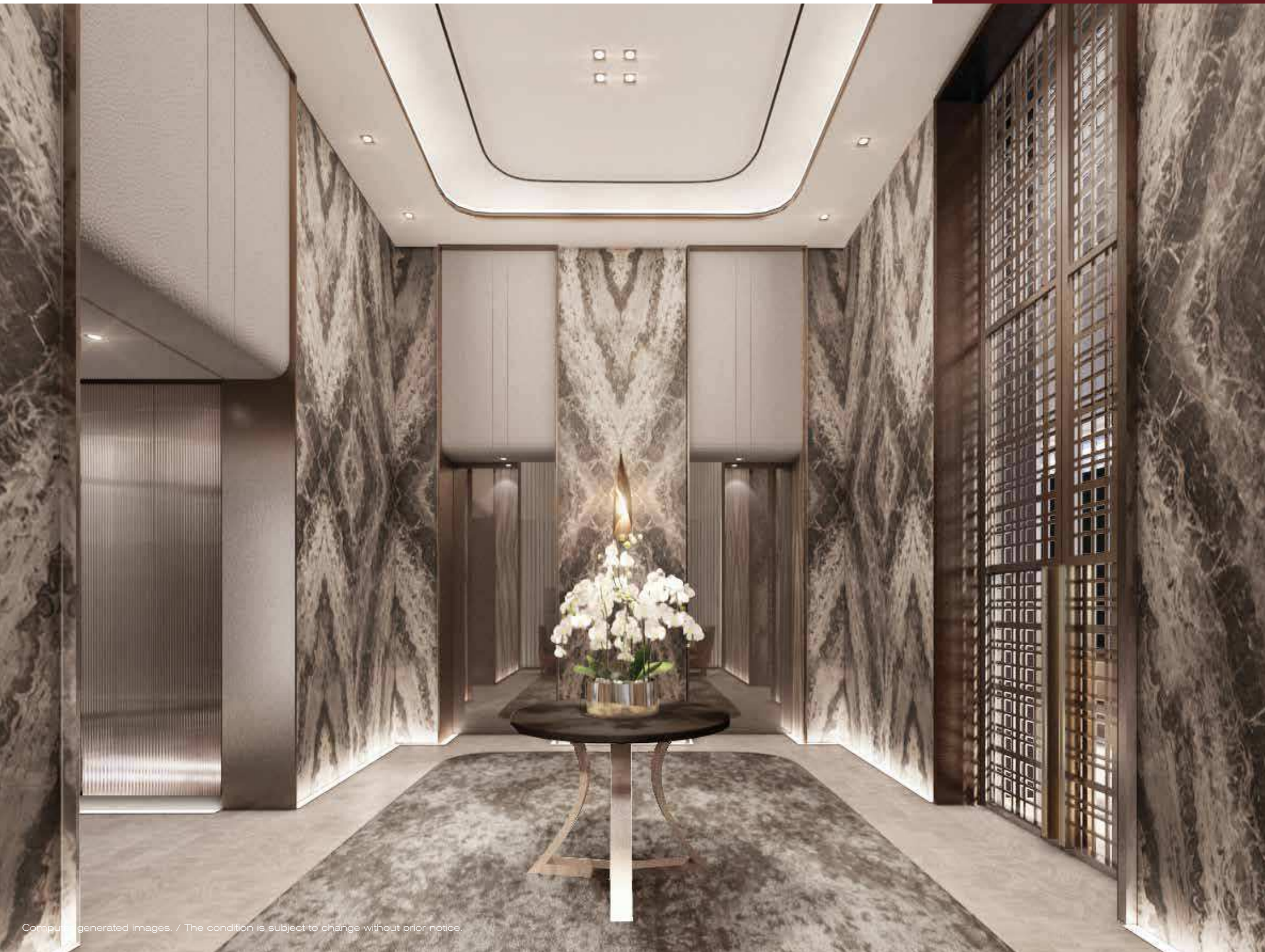
## MAIL ROOM

Receiving a letter will never be the same again when your post arrives in the most unique mail Room of any condominium. Evocative of the drawers of cabinets you may remember from childhood, each post box feels like a piece of antique wooden furniture brought up to date with technology of the present. Each cabinet is fashioned in wood and detailed with premium leather, set alongside brass handles in a unique shape and pattern that are amusing to use.



Computer generated images. / The condition is subject to change without prior notice.

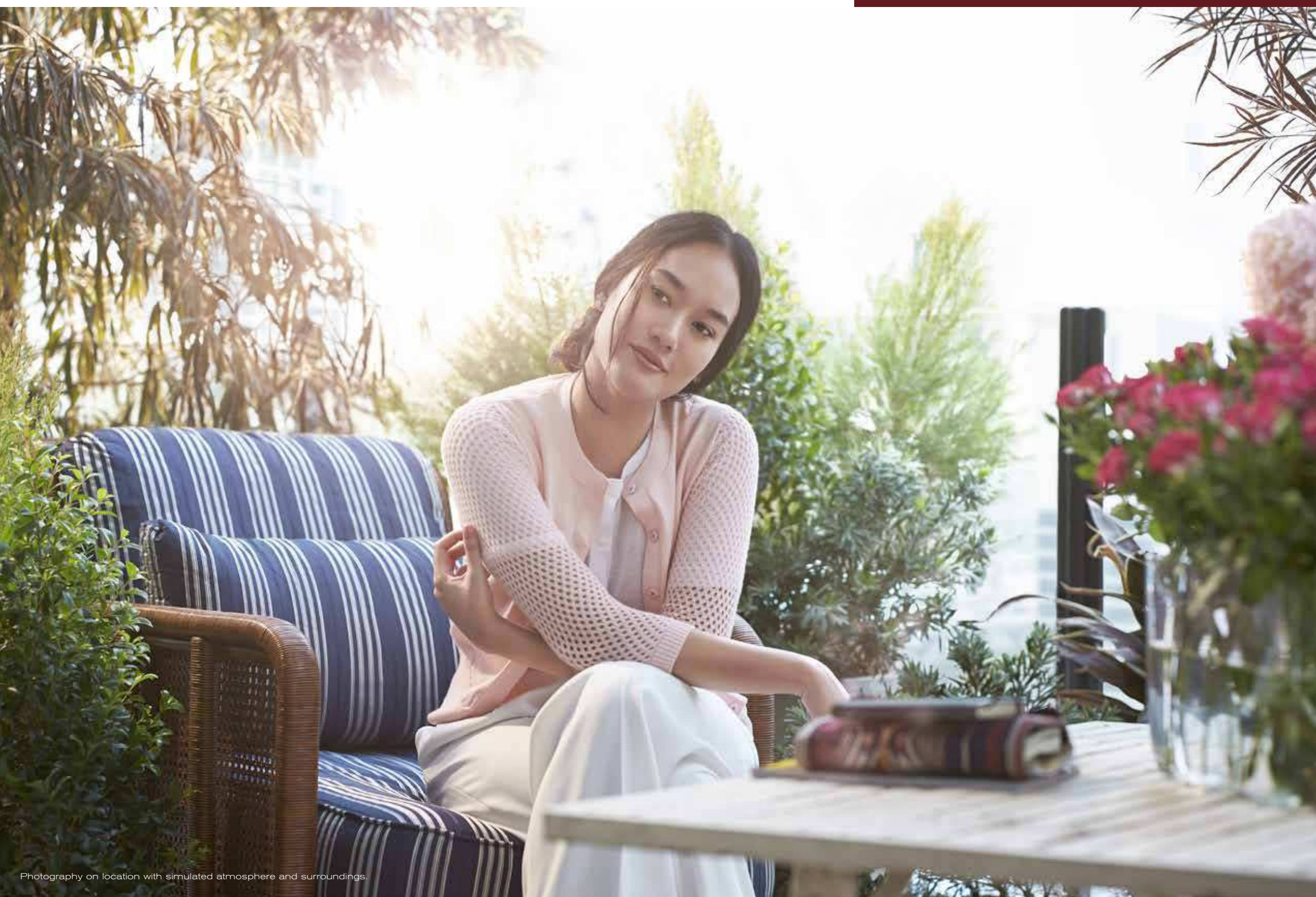




## PRIVATE LIFT

Enjoy the advantages of your own private lift with the unique destination control system. Each lift may only be used by you or your family at the same time and takes you directly only to permitted levels, such as communal facility floors and your own private residence, ensuring you appreciate the highest privacy and sense of wellbeing.





Photography on location with simulated atmosphere and surroundings.





Computer generated images. / The condition is subject to change without prior notice.

## BALCONY SPACE

Truly live your life up in the sky from the vantage point of a sprawling outdoor space connecting directly from the living room. Floors and ceilings covered in solid wood give the natural touch to a personal oasis perfect for avid gardeners to add the beauty of a small plot to their own residence. With so much room to play with, sit back, relax and enjoy a delicious cup of tea, appreciate a family meal in the open air or even host a party for your friends in the great outdoors.





Computer generated images. / The condition is subject to change without prior notice.



**GESI**

The basic and pure beauty of the rigorous rectangular forms entitle Recttangolo to be an icon of design. This collection by Gessi has opened the way to the essential elegance of the square and minimalist forms for bathroom furnishings, form nobody has dared or even imagined before.





BATHROOM

Make the mundane routine of life truly exceptional in a bathroom designed to be sumptuous yet perfectly functional. Paved with Petra Grey marble on the floor and Arabescato marble on the walls, you are enveloped in a cocoon of sheer luxury for those private moments of contemplation, complemented by high quality sanitary wares such as those from the brand Gessi.



Computer generated images. / The condition is subject to change without prior notice.



Computer generated images. /  
The condition is subject to change without prior notice.





Computer generated images. / The condition is subject to change without prior notice.



## LIFESTYLE AT LIVING ROOM

The meaning of luxurious space is truly appreciated within your own home, where the sense of size really matters. With only oversized residences on offer, each living environment is perfect for entertaining or enjoying extensive solitude with your loved ones.



Photography on location with simulated atmosphere and surroundings.



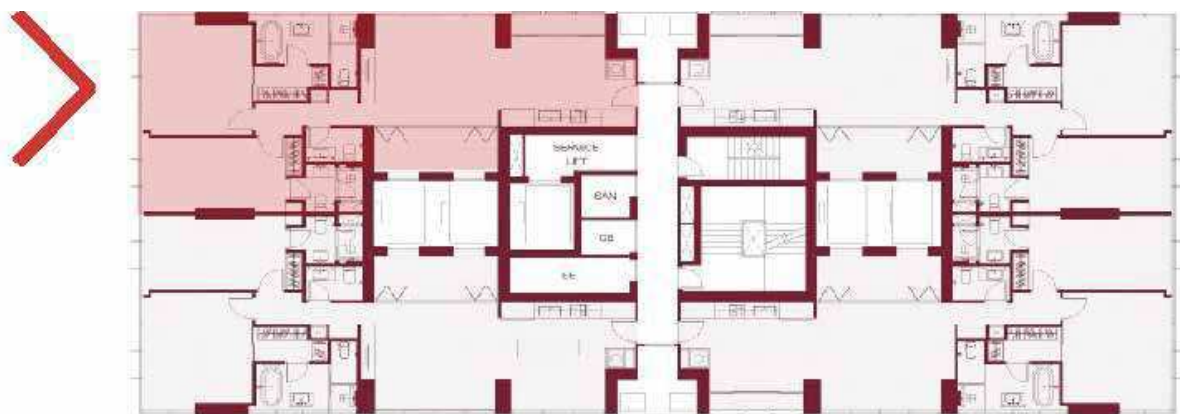
## LIVING ROOM

Bask in the oversized comfort of a vast space at the heart of the home, where families may gather and grow ever closer. From the everyday routine of doing some work, relaxing and watching television to more special occasions and parties, the living room affords the ultimate privacy cloaked in sound proofing and light reflecting insulated glass with low emissivity film. Feel immersed in luxury in every way, with White Venus marble flooring throughout, complemented by the lofty ceilings that add another dimension to the expansive environment.



Computer generated images. / The condition is subject to change without prior notice.





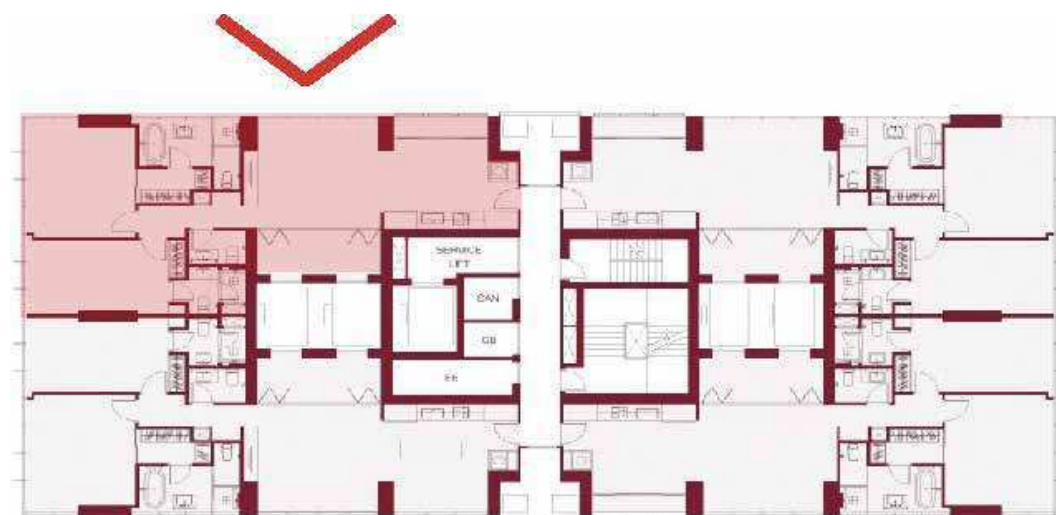
**24<sup>th</sup> Floor Plan (2 Bed)**  
**Height 85 m.**



Thong Lo

THE  
**MONUMENT**  
THONG LO





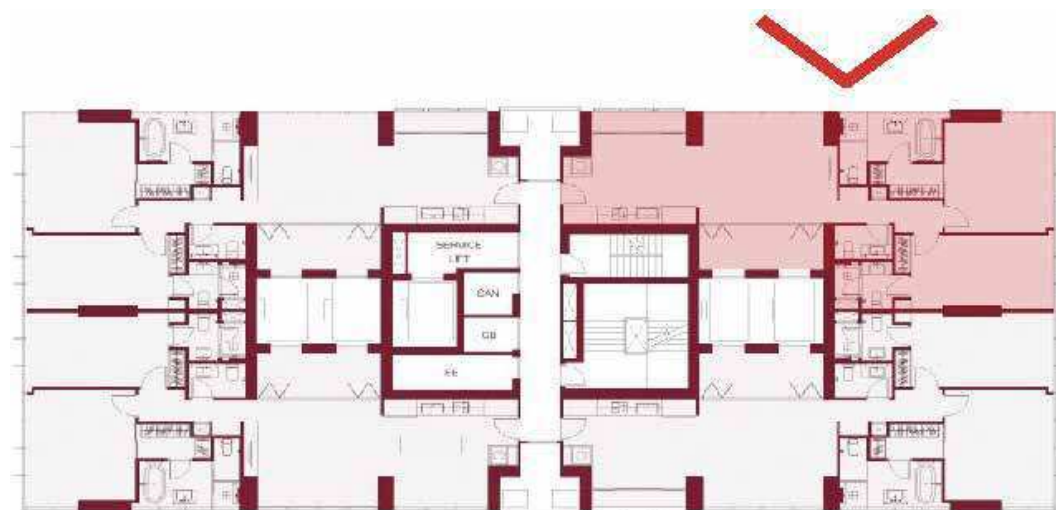
**24<sup>th</sup> Floor Plan (2 Bed)**  
**Height 85 m.**



Thong Lo

THE  
**MONUMENT**  
THONG LO





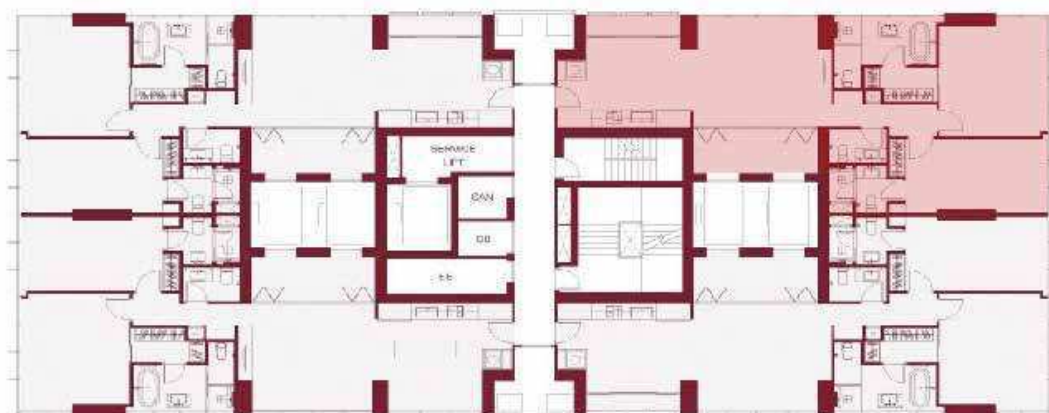
**24<sup>th</sup> Floor Plan (2 Bed)**  
**Height 85 m.**



Thong Lo

THE  
**MONUMENT**  
THONG LO





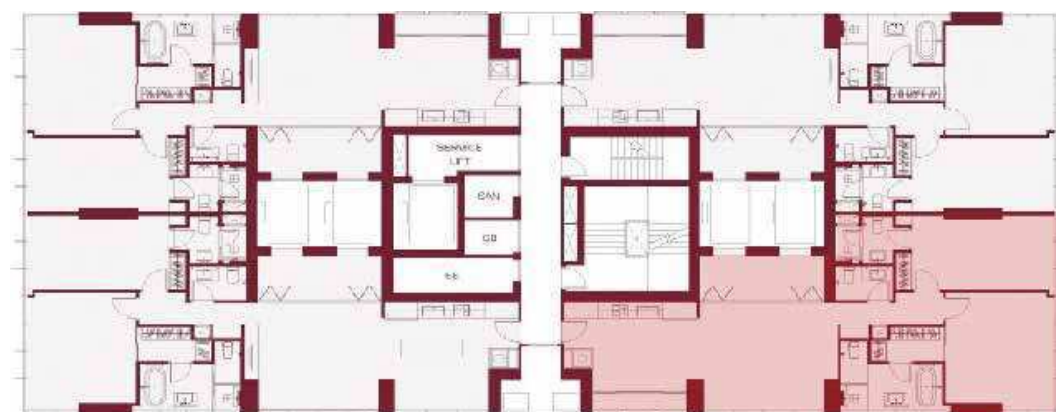
**24<sup>th</sup> Floor Plan (2 Bed)**  
**Height 85 m.**



Thong Lo

THE  
**MONUMENT**  
THONG LO





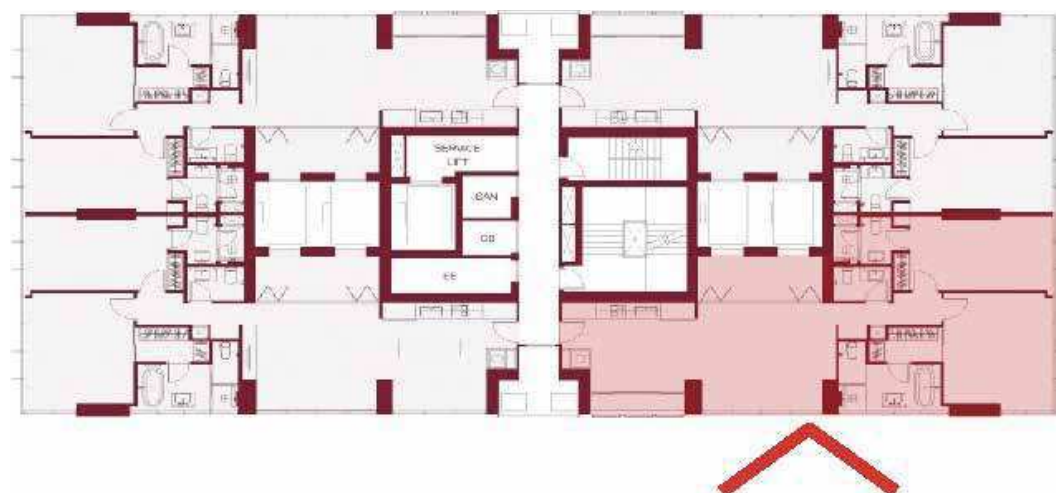
**24<sup>th</sup> Floor Plan (2 Bed)**  
**Height 85 m.**



Thong Lo

THE  
**MONUMENT**  
THONG LO

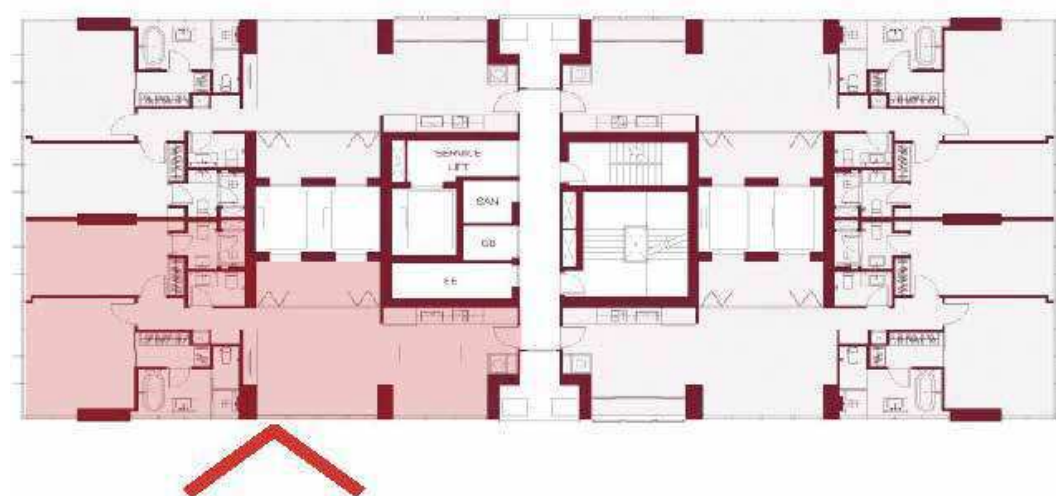
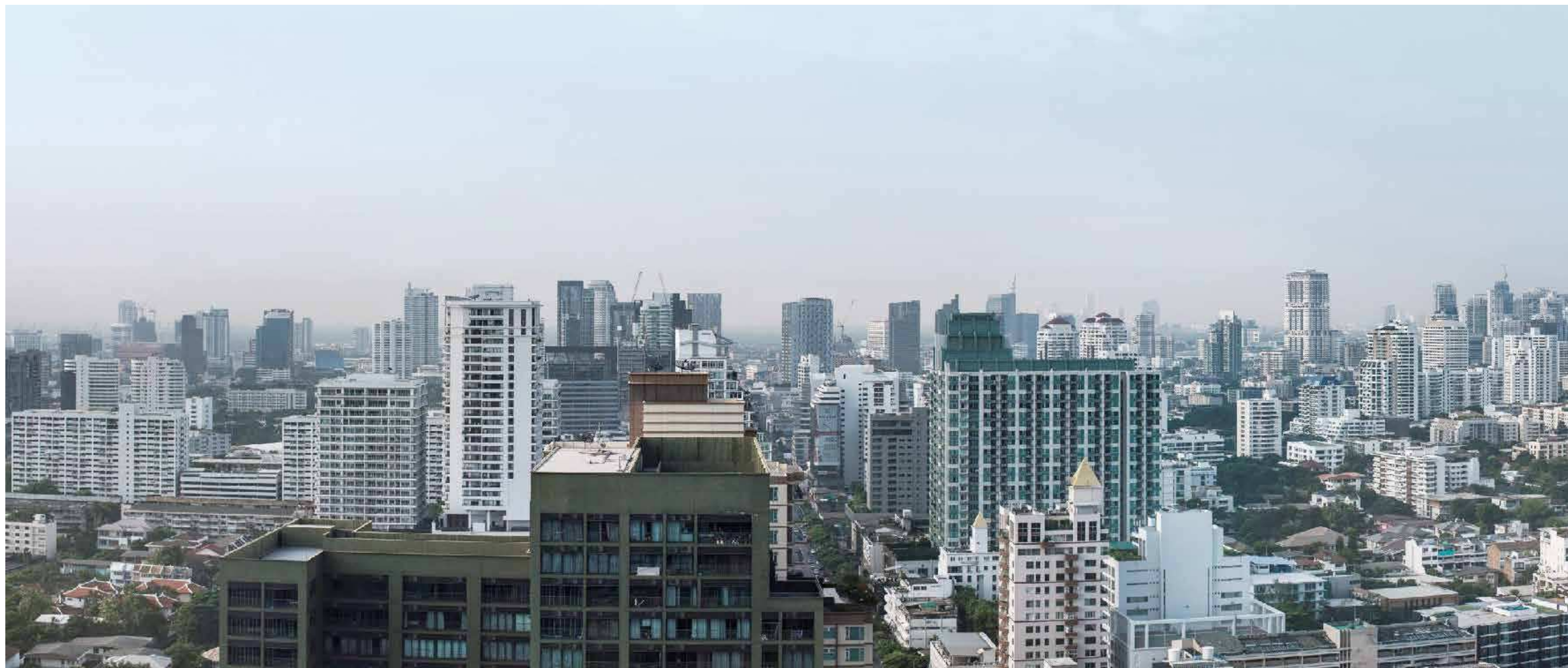




**24<sup>th</sup> Floor Plan (2 Bed)**  
**Height 85 m.**







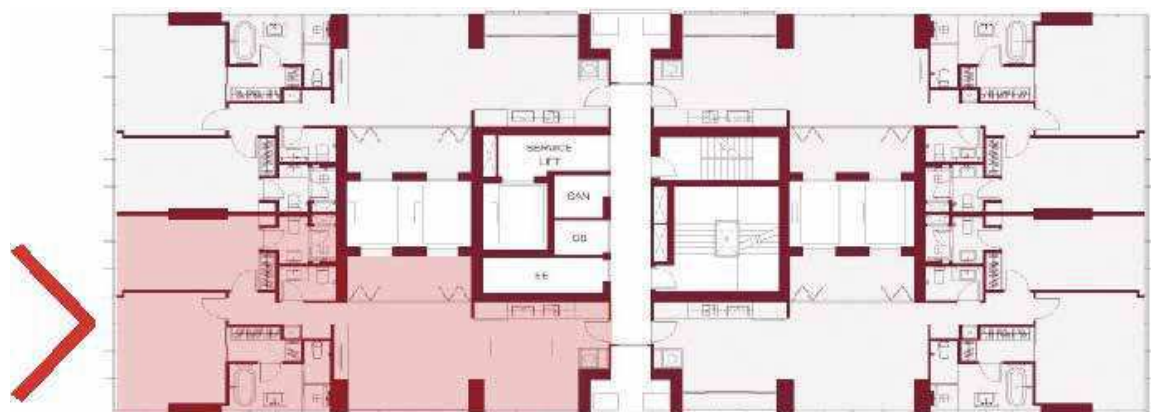
**24<sup>th</sup> Floor Plan (2 Bed)**  
**Height 85 m.**



Thong Lo

THE  
**MONUMENT**  
THONG LO





**24<sup>th</sup> Floor Plan (2 Bed)**  
**Height 85 m.**



Thong Lo

THE  
**MONUMENT**  
THONG LO





**34<sup>th</sup> Floor Plan (3 Bed)**  
**Height 123 m.**







**34<sup>th</sup> Floor Plan (3 Bed)**  
**Height 123 m.**



Thong Lo

THE  
**MONUMENT**  
THONG LO





**34<sup>th</sup> Floor Plan (3 Bed)**  
**Height 123 m.**



Thong Lo

THE  
**MONUMENT**  
THONG LO









**34<sup>th</sup> Floor Plan (3 Bed)**  
**Height 123 m.**



Thong Lo

THE  
**MONUMENT**  
THONG LO





**34<sup>th</sup> Floor Plan (3 Bed)**  
**Height 123 m.**







**44<sup>th</sup> Floor Plan (PH)**  
**Height 168 m.**







**44<sup>th</sup> Floor Plan (PH)**  
**Height 168 m.**



Thong Lo

THE  
**MONUMENT**  
THONG LO





**44<sup>th</sup> Floor Plan (PH)**  
**Height 168 m.**



Thong Lo

THE  
**MONUMENT**  
THONG LO





**44<sup>th</sup> Floor Plan (PH)**  
**Height 168 m.**



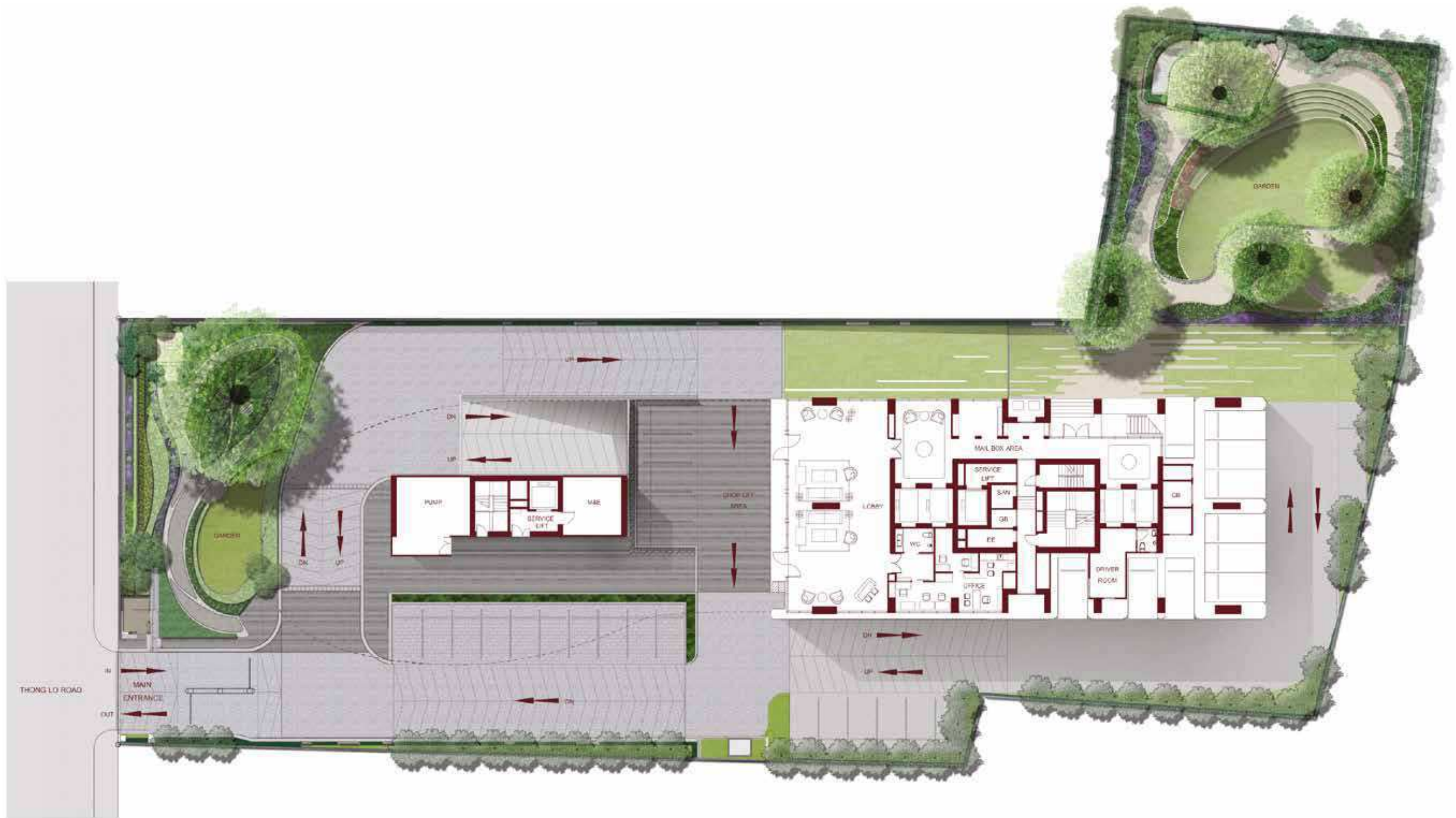
Thong Lo

THE  
**MONUMENT**  
THONG LO



## MASTER PLAN



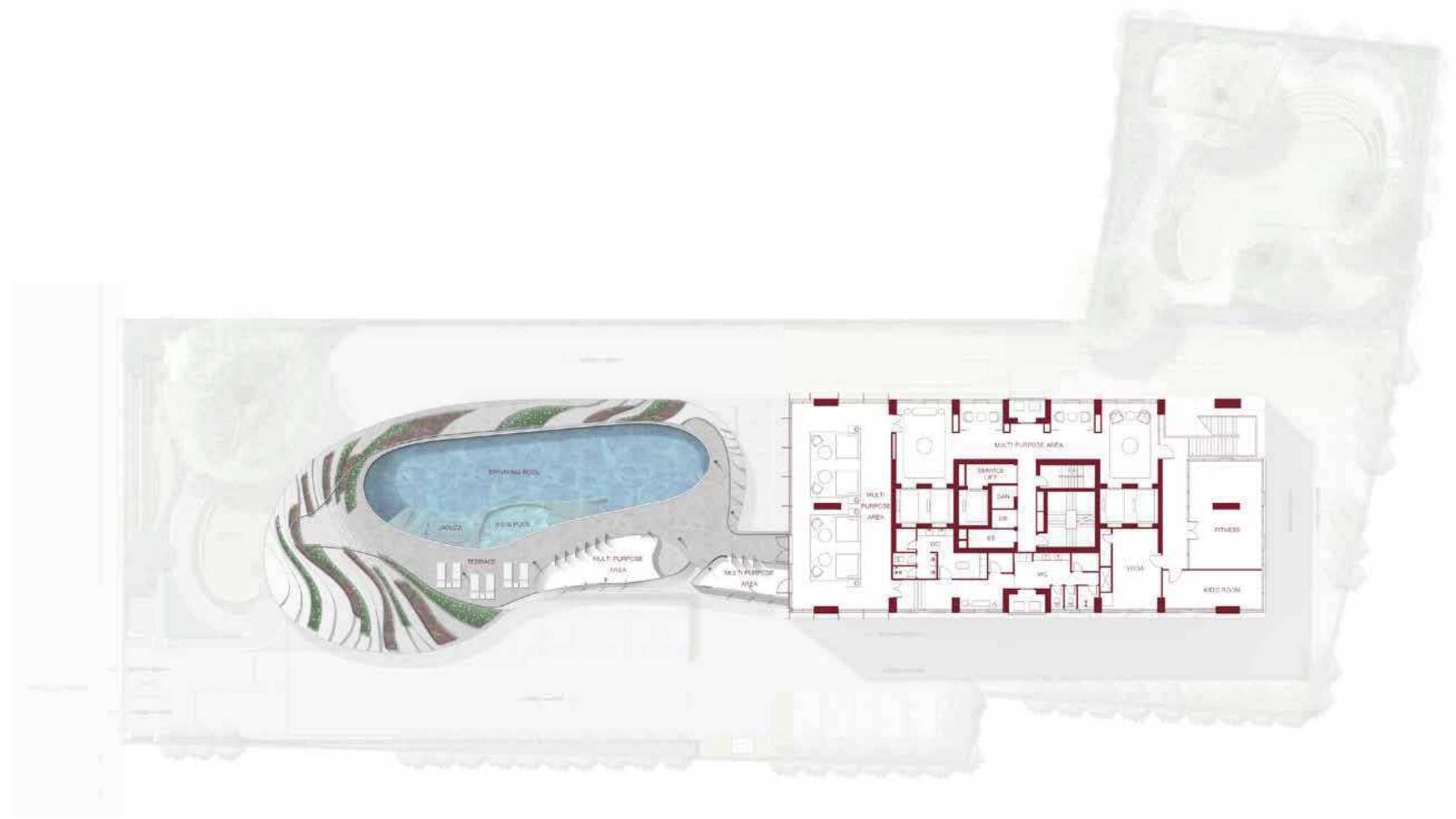


**Remark:** Layout and area of the properties which identified herein maybe changed as deemed appropriate, but will not impact upon the use



## FACILITIES PLAN





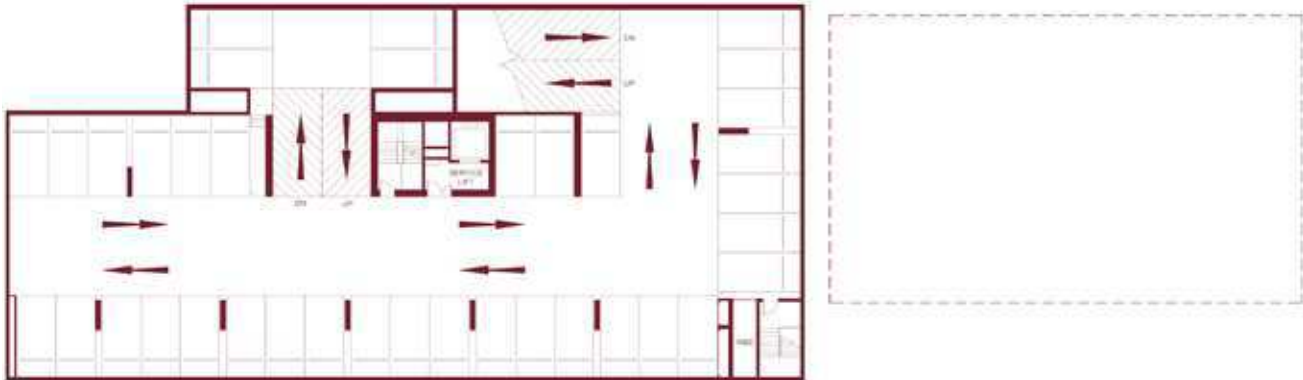
**Remark:** Layout and area of the properties which identified herein maybe changed as deemed appropriate, but will not impact upon the use



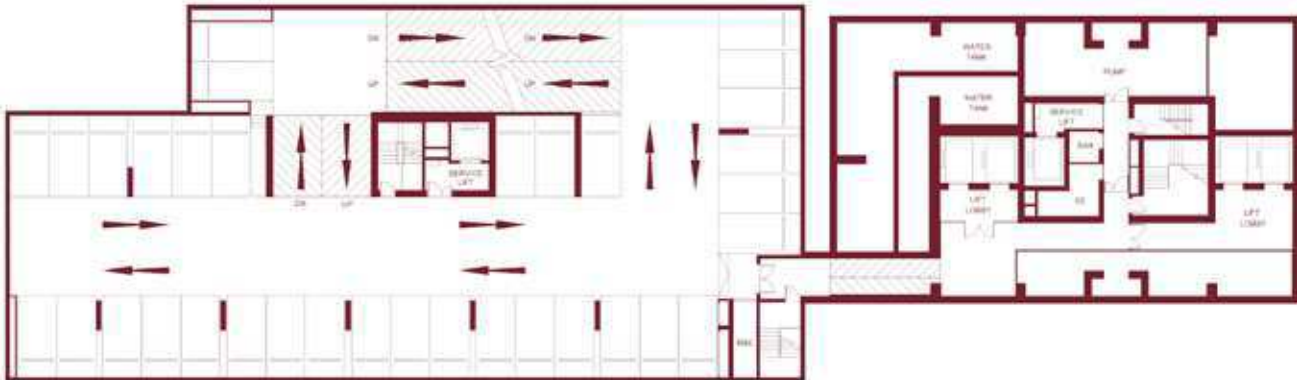
## FLOOR PLAN



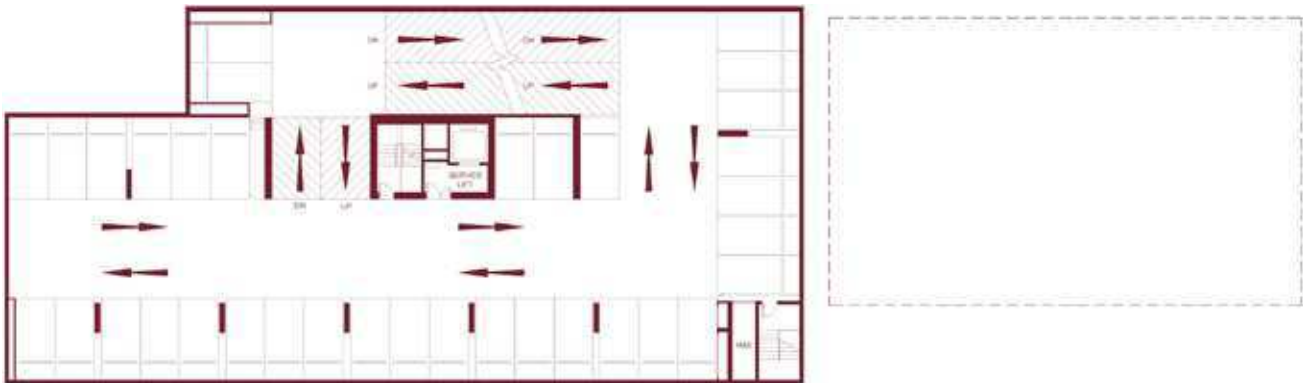
B6



B1



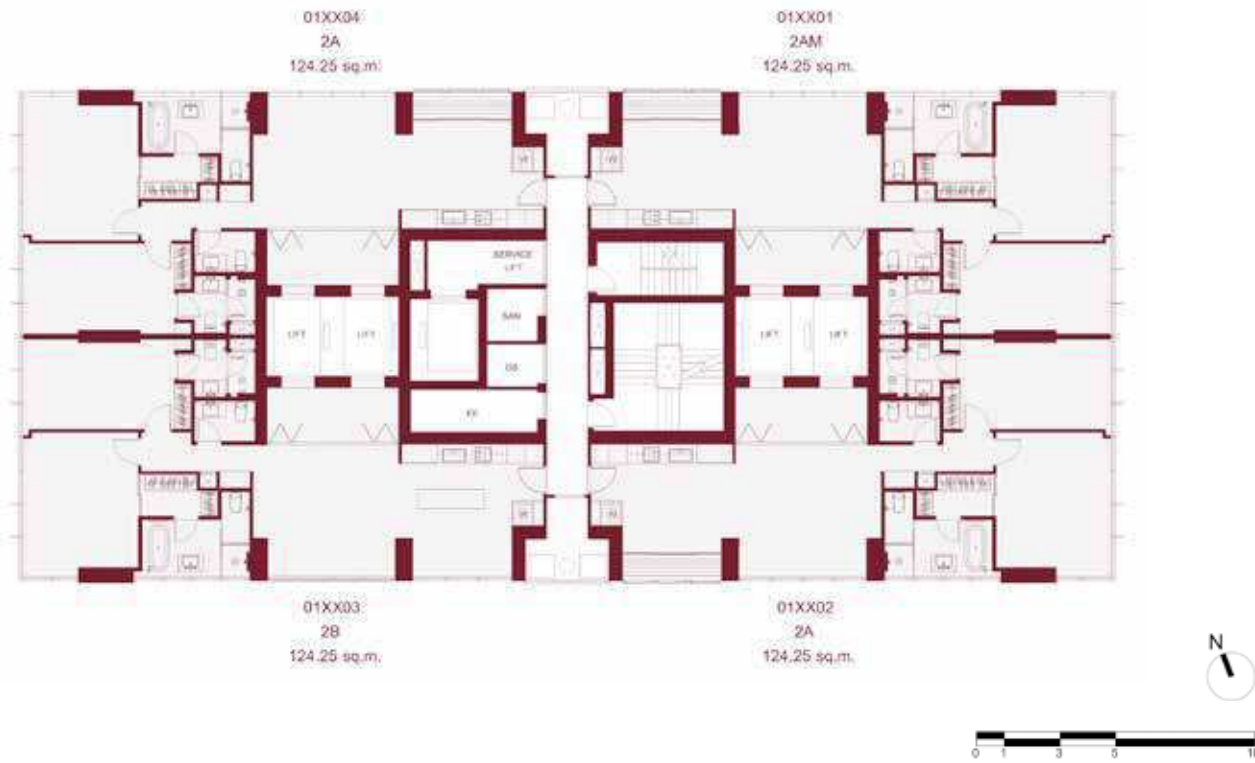
B2 - B5



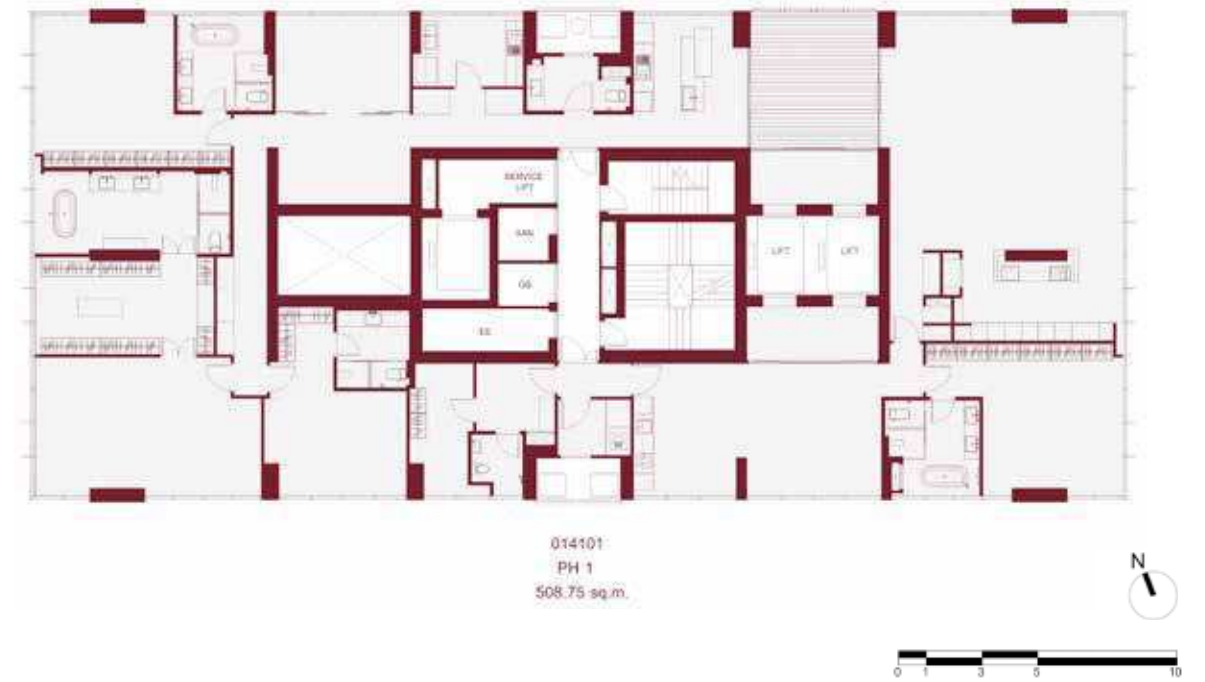
**Remark:** Layout and area of the properties which identified herein maybe changed as deemed appropriate, but will not impact upon the use



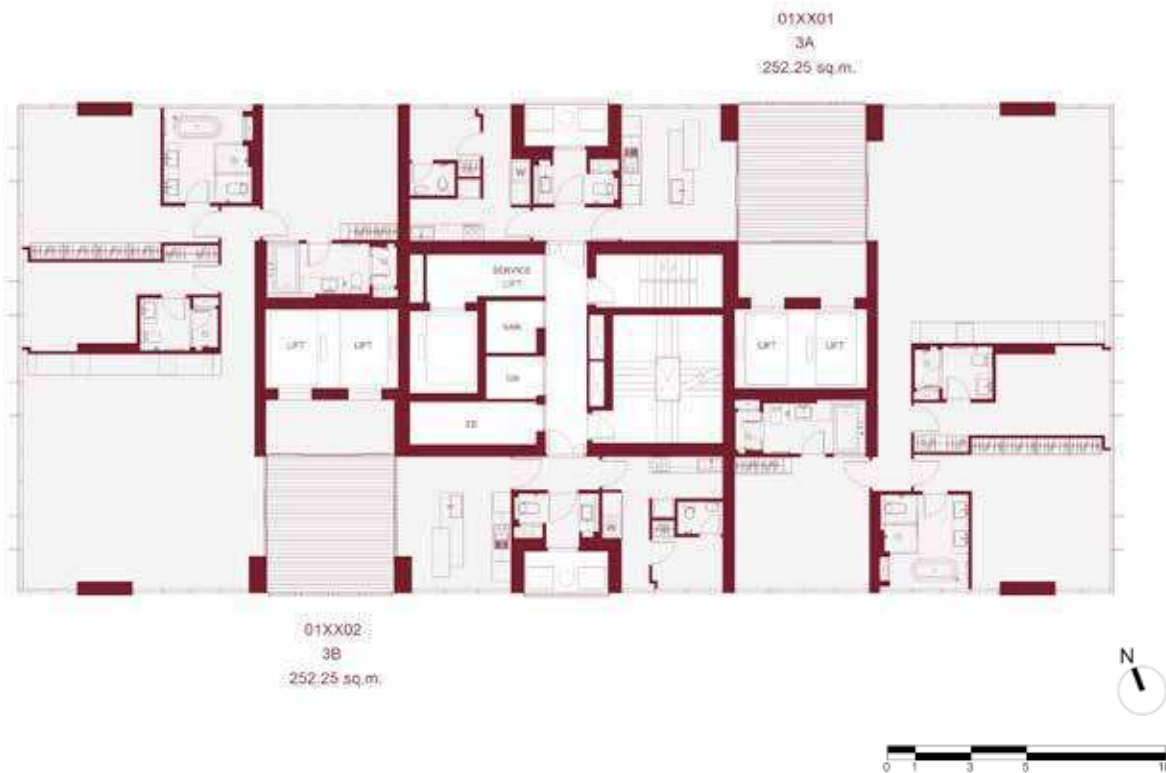
3<sup>rd</sup> - 27<sup>th</sup>



41<sup>st</sup>



29<sup>th</sup> - 40<sup>th</sup>



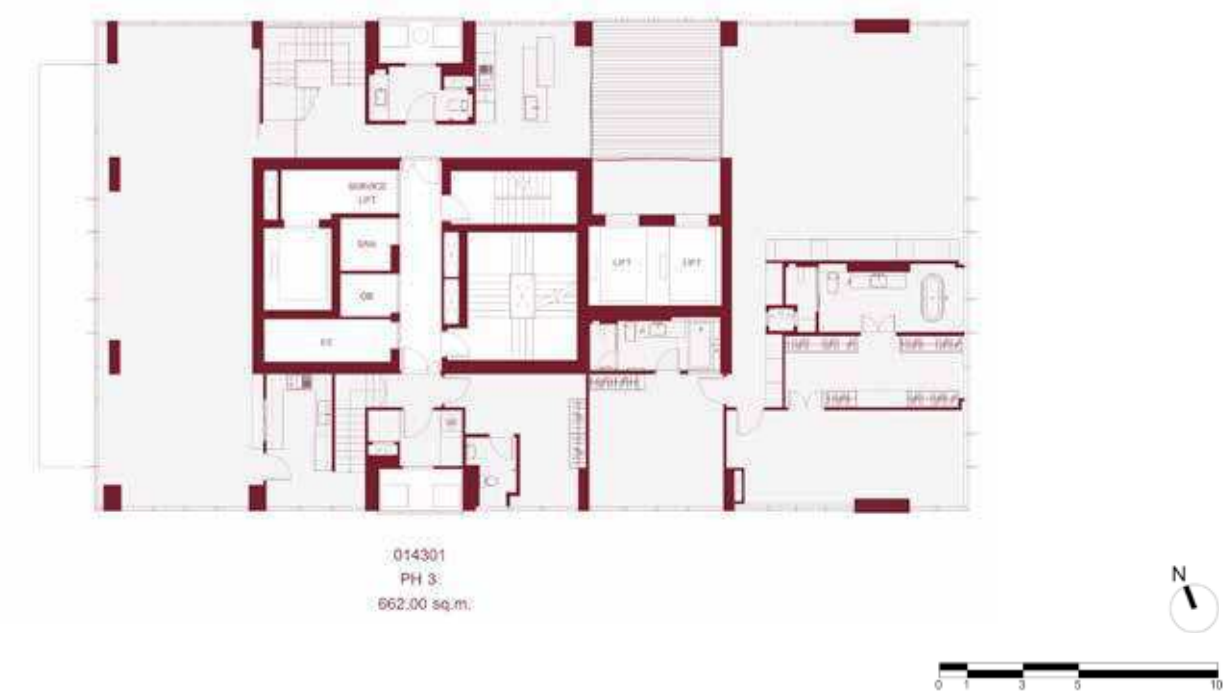
42<sup>nd</sup>



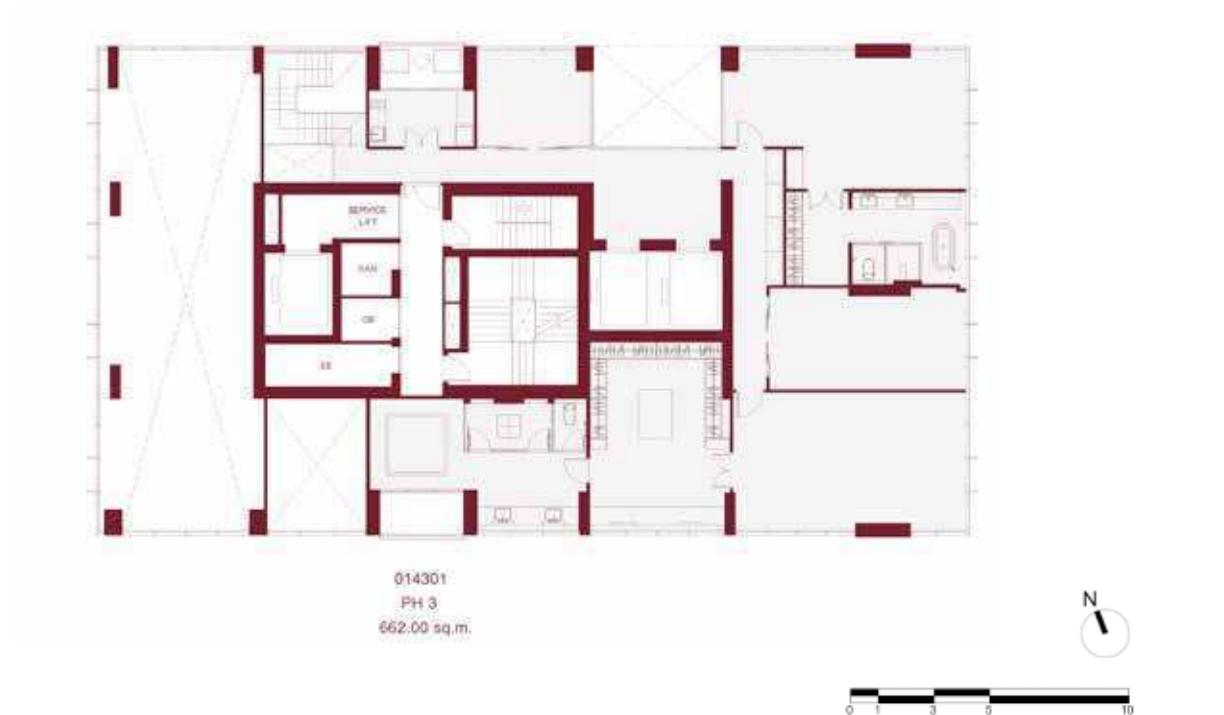
**Remark:** Layout and area of the properties which identified herein maybe changed as deemed appropriate, but will not impact upon the use



43<sup>rd</sup>



44<sup>th</sup>



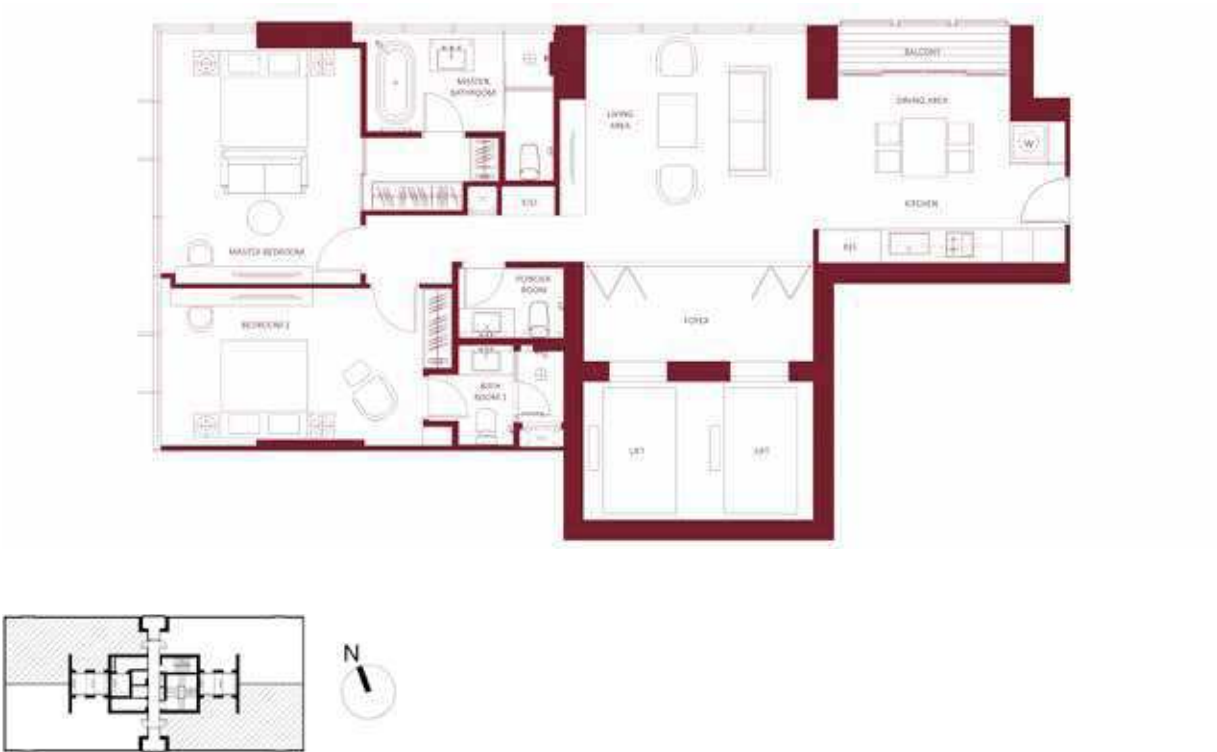
**Remark:** Layout and area of the properties which indentified herein maybe changed as deemed appropriate, but will not impact upon the use



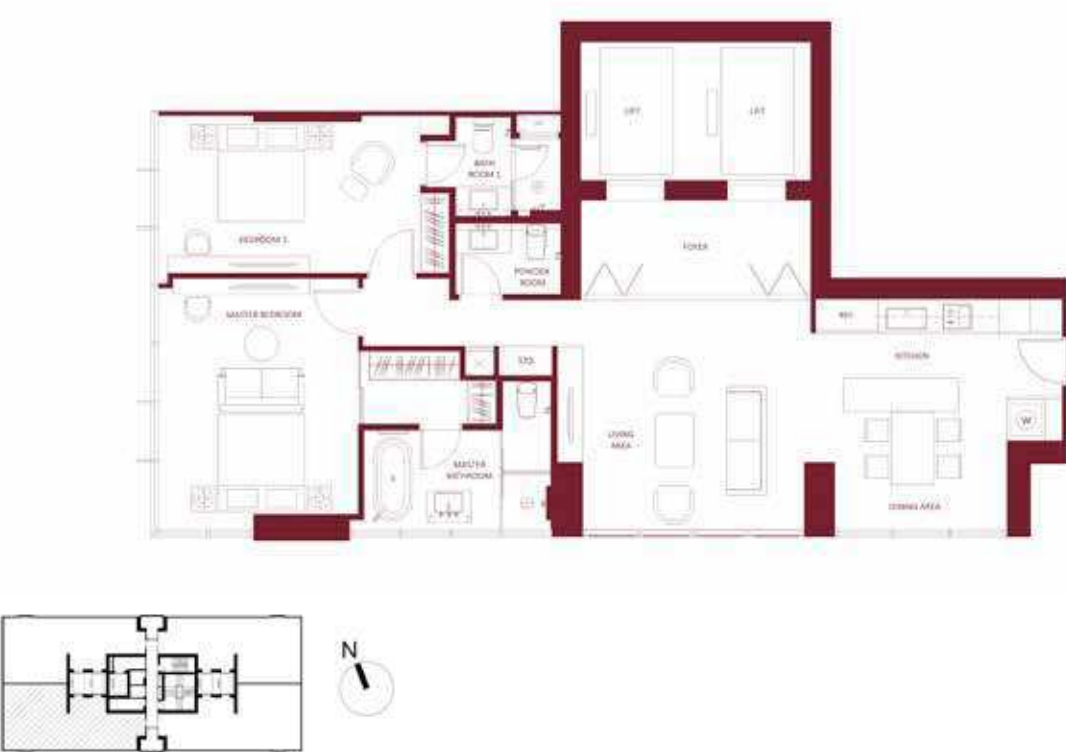
## ROOM LAYOUT



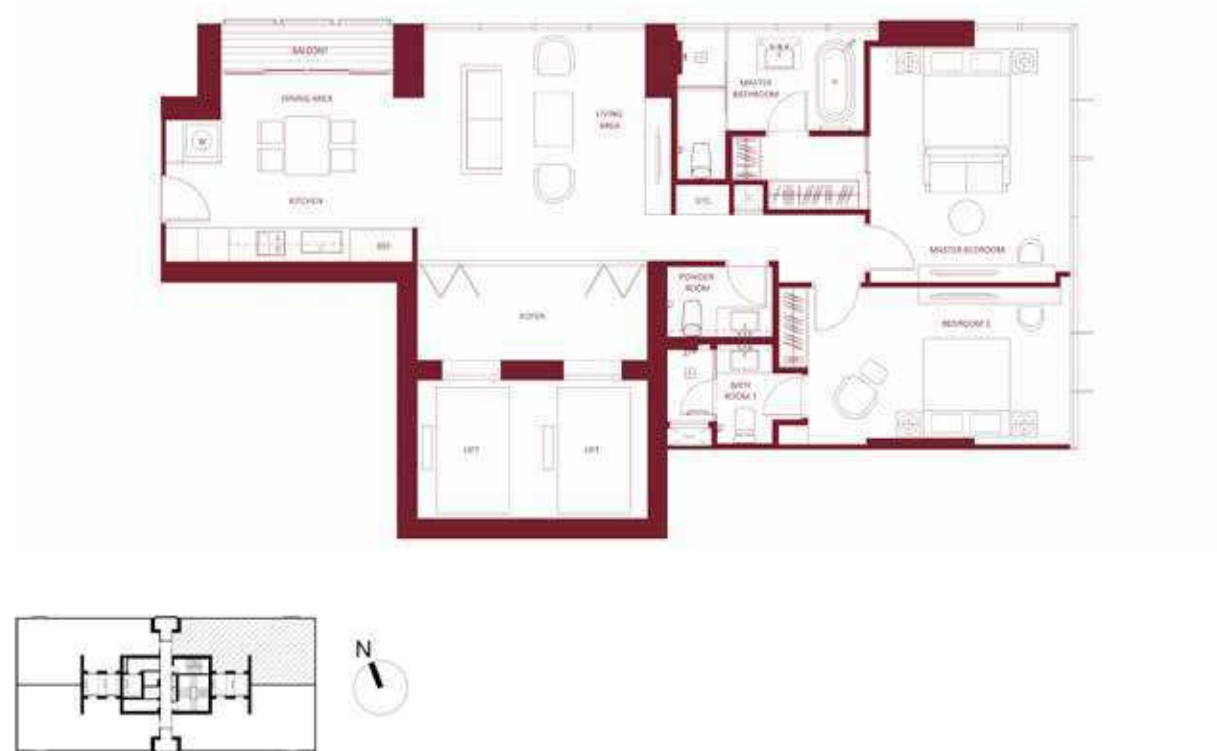
**2A**  
124.25 sq.m.



**2B**  
124.25 sq.m.



**2AM**  
124.25 sq.m.



**3A**  
252.25 sq.m.



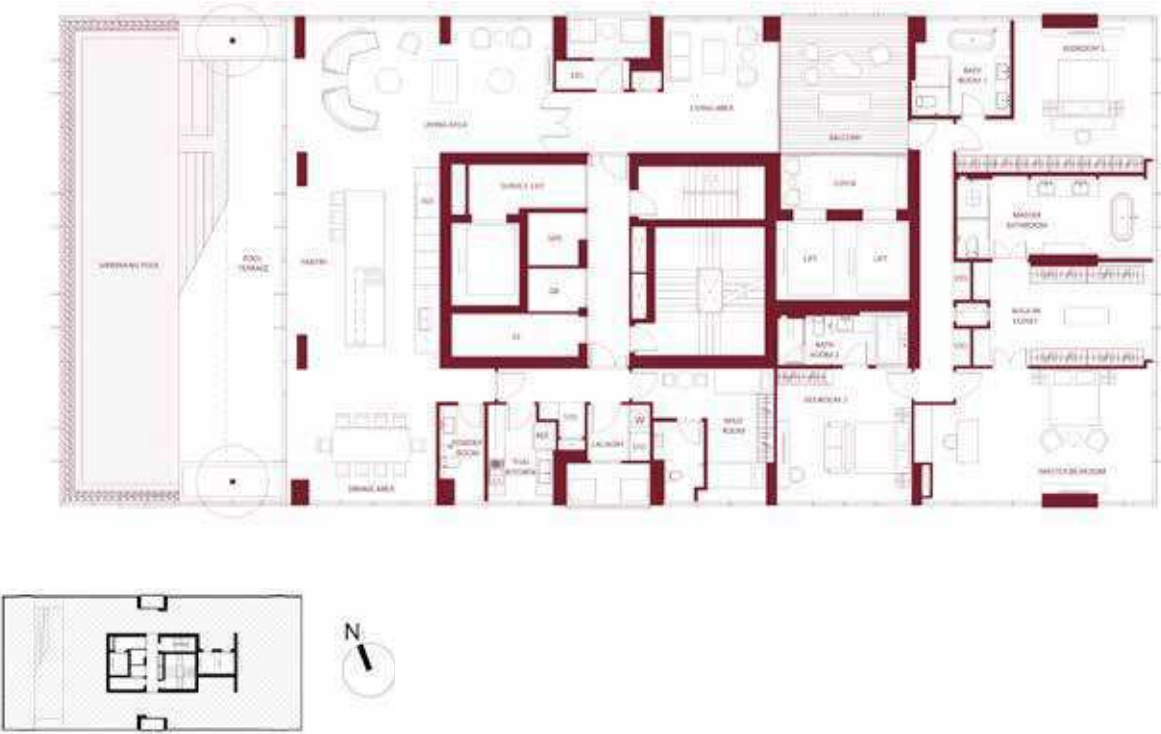
**Remark:** Layout and area of the properties which indentified herein maybe changed as deemed appropriate, but will not impact upon the use



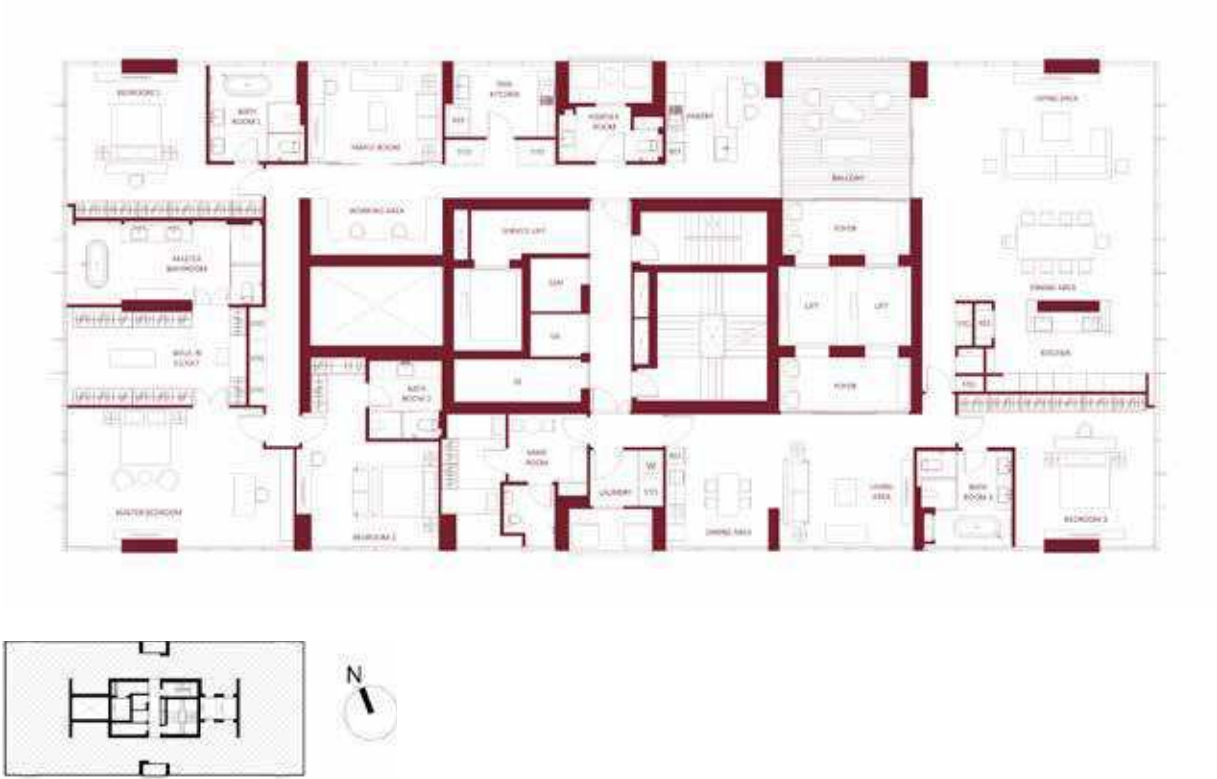
**3B**  
252.25 sq.m



**PH2**  
520.75 sq.m



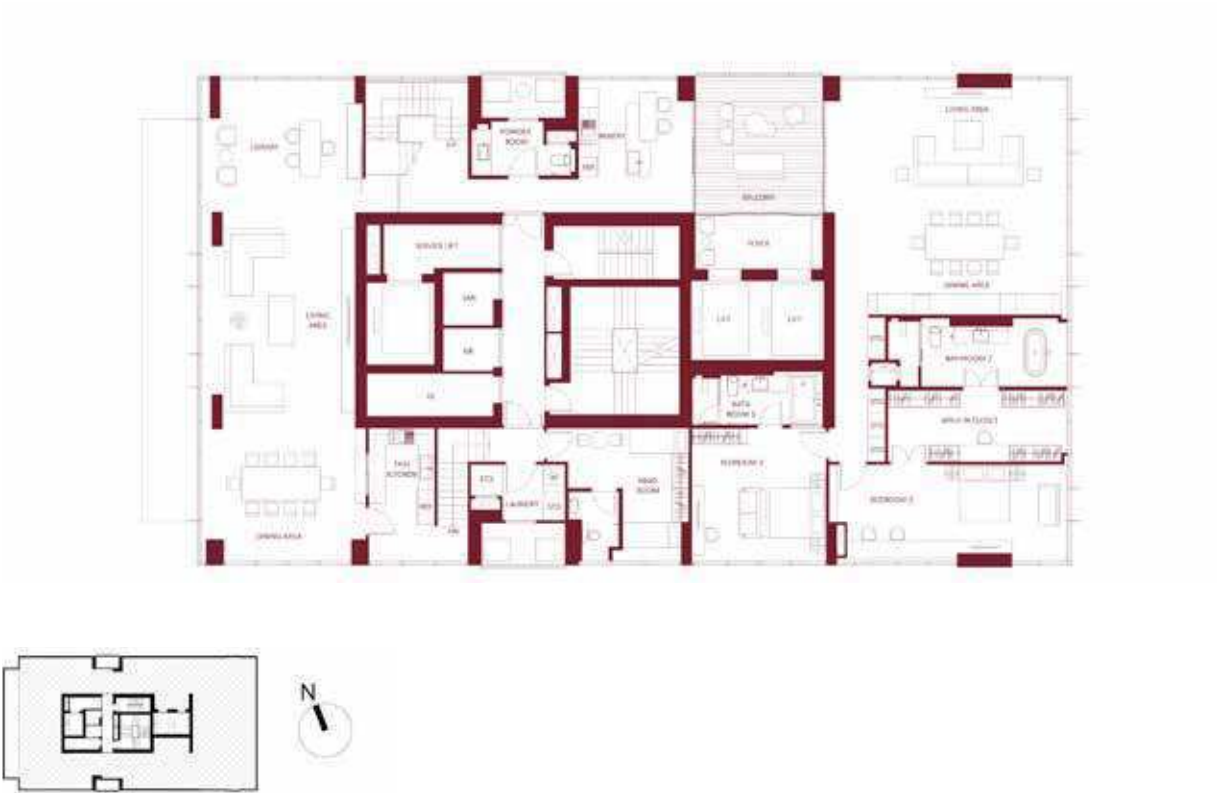
**PH1**  
508.75 sq.m



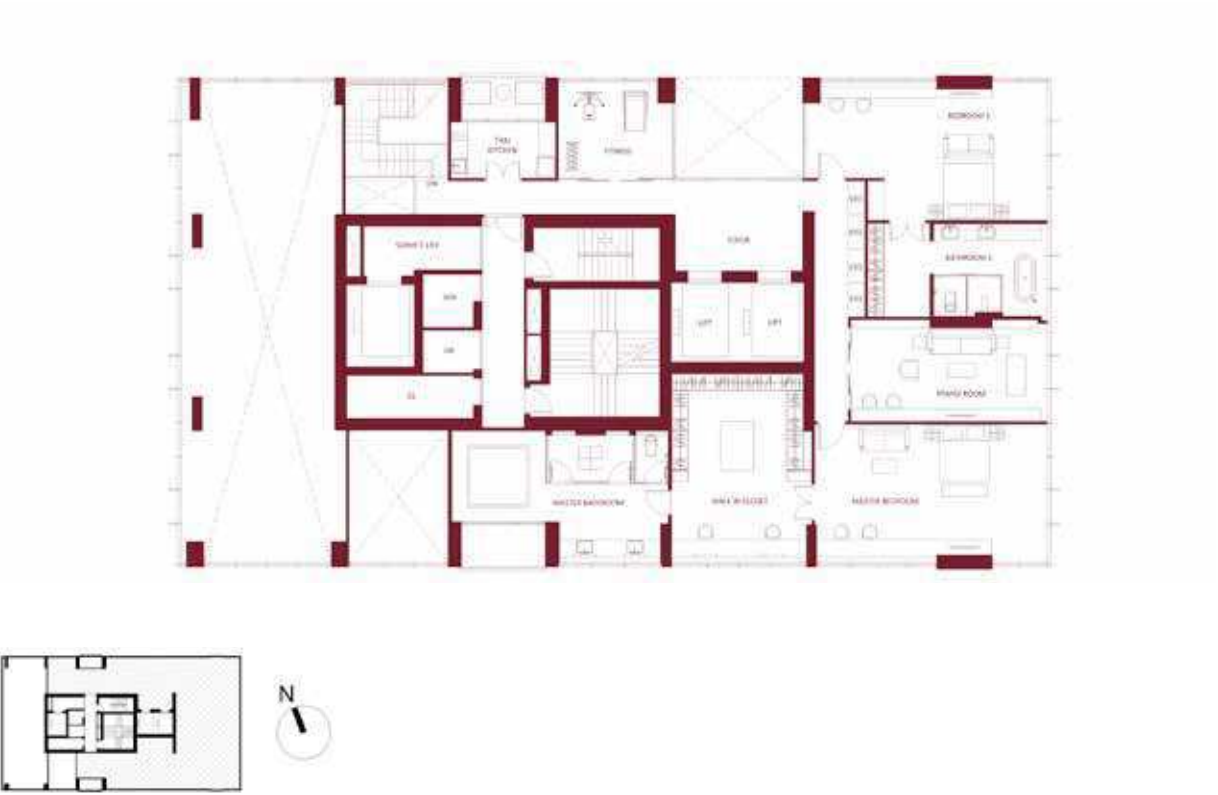
**Remark:** Layout and area of the properties which identified herein maybe changed as deemed appropriate, but will not impact upon the use



PH3: Lower



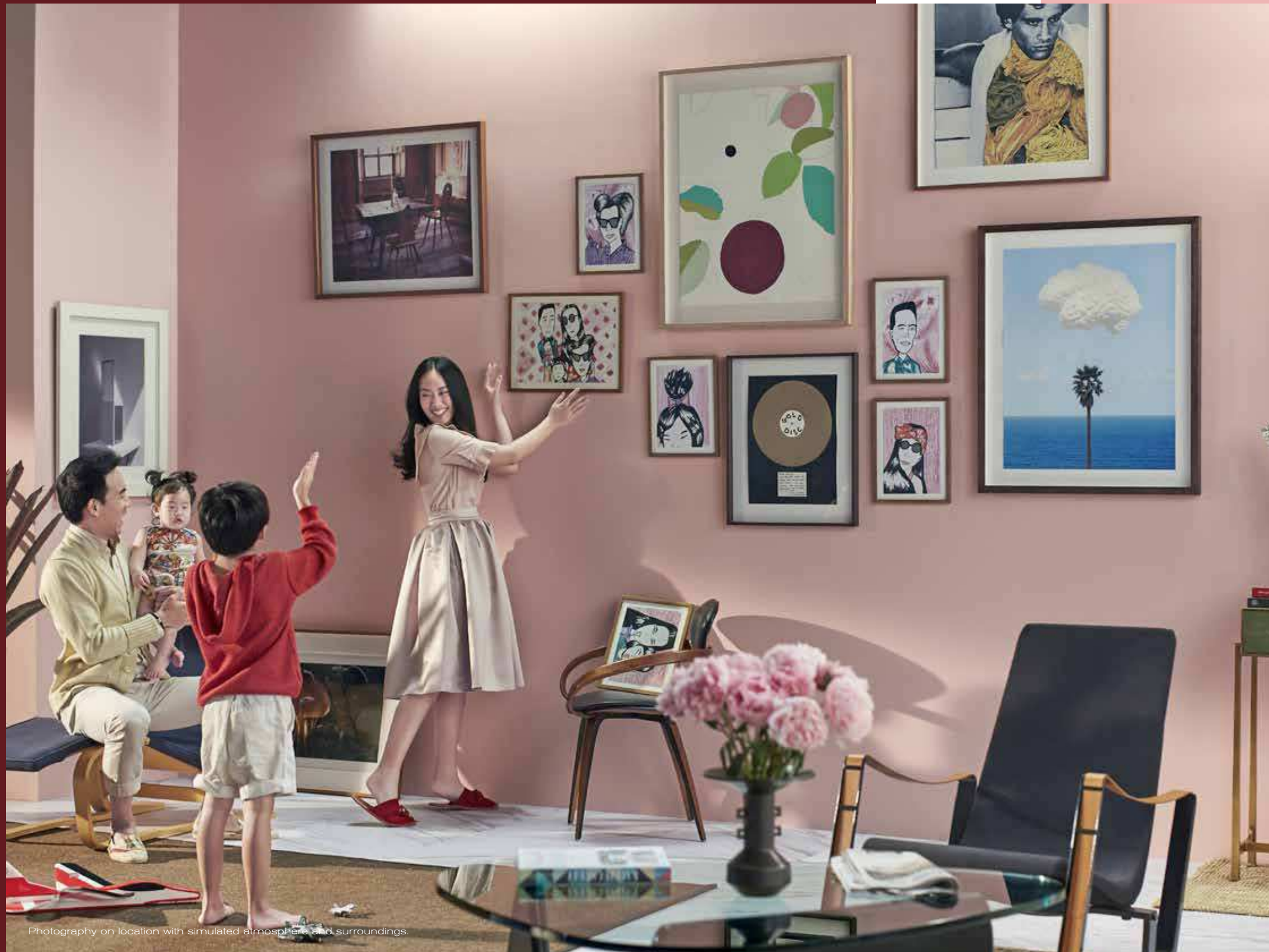
PH3: Upper



**Remark:** Layout and area of the properties which indentified herein maybe changed as deemed appropriate, but will not impact upon the use



LUXURY IS SPACE



Photography on location with simulated atmosphere and surroundings.



FACT SHEET

Location	:	Sukhumvit 55 (Soi Thong Lo)
Land Area	:	Approximately 2 Rai
Project Type	:	45 Stories 1 Building 6 Basement (Parking)
Total Units	:	127 Units

Unit Type	Unit Area (sq.m.)*
2 Bedrooms 3 Bathrooms	124.25
3 Bedrooms 4 Bathrooms	252.25
Penthouses	508.75 - 662.00

Project Highlights

- Situated on the main Thong Lo road with easy access to essential amenities including international schools, restaurants, supermarkets and hospitals
- Spacious and exclusive residential units with only maximum of 4 units per floor
- All residential units are cornered units with insulated glass with low emissivity film portreying 180 degree city view
- Each unit offers an expansive living area and kitchen suitable for family activities
- Absolute privacy with designated elevator straight to own's residence
- Private swimming pool with panoramic city view (Penthouse unit)

Facilities and Services

- An iconically sculpture formed approximately 28 metre-long swimming pool with kids' pool
- Nearly 1,000 Square metres worth of city view recreational garden area with well equipped kids' playground and tree house, accessible from the fitness
- Fitness room with world class equipment situated adjacent to a yoga room
- Numerous parking spaces (192%)
- Multi purpose area
- Kids' amusement area
- Drivers' lounge
- 24-hour Butler service
- 24-hour Security and CCTV
- Wireless Internet on facilities floor and lobby
- 1 year Quintessentially Service
- Sansiri Family





At Sansiri, we believe the word home represents much more than one's address. Home is a sanctuary where individuals and families can enjoy their time in a positive environment, surrounded by the comforts and conveniences that allow for a genuinely happy life. We are dedicated to providing residential properties and services that best respond to our customers' deeper needs. This is our promise to those who have put their trust in us and become an important part of our Sansiri Family.

#### **SERVICE**

- **HOME CARE** Take care of every aspect of your home and enjoy the peace of mind afforded by our 24-hour online emergency notification service.
- **INSTALMENT SERVICE** You can easily check your instalment payment status or print out a payment card through Sansiri's new Online Payment Card system.
- **SANSIRI HOME SERVICE APPLICATION** A must have mobile application that serves as your very own personal assistant to facilitate today's urban living. Conveniently follow news and get real-time notifications from juristic person plus other features such as repairing report and status. Available for download at App Store and Play Store.
- **CONDO CONSTRUCTION PROGRESS** Receive regular project progress updates via our e-newsletter each month. You can check the progress of our other projects at [www.sansiri.com/condoprogress](http://www.sansiri.com/condoprogress)

#### **PRIVILEGE**

- **EXCLUSIVITY** Add colour to those precious family moments with a host of special privileges and fun-filled activities, available exclusively to Sansiri Family members.
- **SANSIRI LOUNGE** Located on the 3rd Floor of Siam Paragon, Sansiri Lounge provides a comprehensive lifestyle experience. Simply register with your phone number to enjoy convenient services, including instalment payment service for your property and Free Wi-Fi.
- **SCB SANSIRI PLATINUM CARD** The only card you need for your home and lifestyle. Enjoy the simplicity of a credit card that answers the diverse needs of homeowners, and live life to the fullest with the added advantage of Platinum Privileges.

#### **PROPERTY MANAGEMENT**

- **PLUS PROPERTY** Accommodating all of your real-estate needs, our experienced team at Plus Property is ready to provide 360-degree services (Resale, Leasing and Property management) to expand your investment opportunities.

Share your experiences and stay updated with the latest happenings through the following communication channels. Tel +66(0)2 201 3999



Thong Lo

THE  
**MONUMENT**  
THONG LO